

# PRESTO

*Instantaneous*  
**SOUND RECORDING  
EQUIPMENT and DISCS**

PRESTO RECORDING CORP., 242 W. 55th St., New York, U.S.A.



WHERE PRESTO RECORDERS ARE MADE

# INTRODUCTION

---

THE Presto Recording Corporation manufactures two distinct classes of equipment. One is designed for professional users such as phonograph record manufacturers, commercial transcription studios, and broadcasting stations. This equipment, described on the white pages of this catalog, is designed to produce the finest instantaneous recordings possible in the present state of the art.

The second class of equipment, designated as the commercial and educational line, is described on the buff colored pages and is designed to produce recordings of the best quality, consistent with a reasonable cost to the purchaser. The latter group of equipment is used mainly by broadcasting stations, schools and colleges, advertising agencies, industrial organizations, the smaller recording studios, orchestra leaders, and individual actors and musicians.

The professional equipment is sold to the user through an organization of direct factory representatives covering the entire United States.

These factory representatives, having from two to four years experience in the operation and uses of Presto equipment, are thoroughly qualified to advise purchasers on the technicalities of recording and the application of recording equipment in its many fields of usefulness.

The commercial equipment as well as blank discs and needles are sold through a group of sound equipment distributors located in principal cities.

Distribution in foreign countries is handled by agents appointed by the Export Division. Each of these agents is supplied with up-to-date information on Presto equipment and is capable of giving technical advice on its operation.

All requests for special information or advice should be sent either to the factory representatives or directly to the Engineering Department at the factory. Prices shown in the catalog apply to domestic purchases only and will be higher in foreign countries to cover transportation, duties and taxes.

---

## How to Order

All equipment should be ordered by type number or code word. In ordering, kindly give particular attention to the footnotes indicating further information required in addition to the type number. Complete recorders are designated by a letter followed by a numeral. Where the same fundamental model is furnished in several different forms, the change is indicated by the numeral, as Y-2, Y-4, etc. Component parts and accessories are designated by a numeral followed by a letter. The numeral indicates the fundamental type and the following letter indicates improvements, additions or changes, as 85-A, 85-B, 85-E, etc.

For detailed description of component parts of equipment refer to "Index of type numbers".

## Telegraph and Cable Orders

Our office is equipped with a Western Union teletype printer for prompt handling of orders and messages. For quick service, address Presto Recording Corporation, WX, New York. Use code words to save expense in telegraphing orders.

## Shipping Instructions

On all orders, the method of transportation should be specified. In the absence of this information, we will ship by Railway Express. All prices are F.O.B., New York, N. Y., and include domestic packing charges.

## Terms

Net thirty days if satisfactory credit information accompanies order. Shipments are otherwise made C.O.D. Remittances should be made payable at par in New York funds.

## Prices

Subject to change without notice. Unless otherwise specified, formal quotations are open for acceptance within thirty days.

## Quantity Discounts

Quantity discounts on discs are quoted only by authorized Presto distributors. No price quotations on discs are made directly from the factory.

## Specifications

We reserve the right to change specifications of any equipment without assuming any obligation to include the new features or improvements in instruments previously sold.

## Guarantee

The Presto Recording Corporation guarantees to repair or replace, without charge, any equipment or part thereof which shows a defect due to workmanship or materials within ninety days after the date of sale. To obtain free service or replacements under this guarantee, the equipment or part must be returned, transportation prepaid, either to the Presto factory or to the distributor from whom it was purchased.

## Returns and Replacements

Before returning instruments for repair or service, kindly ask our Service Department for shipping instructions and return authorization forms. We cannot assume responsibility for any charges incurred in returning equipment without our authorization. When ordering replacement parts, give the type and serial number of the equipment for which the part is required together with the exact date of purchase and the name of the agent or distributor from whom the equipment was purchased.



# CONTENTS

|  | Page      |  | Page     |
|--|-----------|--|----------|
| <b>COMPLETE RECORDING INSTALLATIONS</b>            |           |  |          |
| Model A recorder.....                              | 1001-2-A  | Pulleys, motor drive, type 231-A.....                      | 1026-A   |
| Model B recorder.....                              | 1003-4-A  | Re-recording turntable, type 140-A.....                    | 1032-A   |
| Model F recorder.....                              | 1005-6-A  | Re-recording pickup, type 141-A.....                       | 1032-A   |
| <b>PORTABLE RECORDERS</b>                          |           | Pickup pedestal, 142-A.....                                | 1032-A   |
| Model C recorder.....                              | 1007-8-A  | Scratch filter, type 501-A.....                            | 1020-A   |
| Model Y recorder.....                              | 1009-10-A | Screwdriver, type 502-A.....                               | 1020-A   |
| Model K recorder.....                              | 1011-12-A | Spirit level, type 503-A.....                              | 1020-A   |
| <b>RECORDING TURNTABLES</b>                        |           | Spring types 131-A and 131-B.....                          | 1026-A   |
| Type 8-A and 8-B.....                              | 1013-14-A | Table, mounting, type 92-A.....                            | 1003-A   |
| Type 28-A.....                                     | 1001-2-A  | Table, mounting, type 93-A.....                            | 1005-A   |
| Type 6-D, 6-E and 6-F.....                         | 1015-16-A | Time scales, type 20-A and 20-B.....                       | 1025-A   |
| Type 26-B.....                                     | 1003-4-A  | Time scale, type 21-A.....                                 | 1025-A   |
| Type 75-A, 75-B and 75-C.....                      | 1017-18-A | Tire, rubber turntable,<br>types 127-A and 127-B.....      | 1026-A   |
| Type 9-A and 9-B.....                              | 1018-A    | Transformer, type 505-A.....                               | 1020-A   |
| <b>TRANSCRIPTION TURNTABLE</b>                     |           | Vertical damper, type 170-A and 170-B.....                 | 1026-A   |
| Type 62-A.....                                     | 1019-20-A | Vertical damper, type 171-A.....                           | 1026-A   |
| <b>TURNTABLE ACCESSORIES</b>                       |           | <b>RECORDING AMPLIFIER EQUIPMENT</b>                       |          |
| Automatic equalizer,<br>types 160-A and 160-B..... | 1023-A    | Mixer, microphone, types 130-A, B, C.....                  | 1029-A   |
| Blower system, type 400-A.....                     | 1027-A    | Preamplifiers, types 40-A and 40-B.....                    | 1030-A   |
| Cutting head, type 1-C.....                        | 1021-A    | Radio Tuner, types 50-A and B.....                         | 1030-A   |
| Feed screws, type 15 and 32.....                   | 1025-A    | Recording amplifiers, types 85-A, B and E.....             | 1029-A   |
| Grommet, rubber, motor, type 220-A.....            | 1026-A    | Recording amplifiers, types 87-A and B.....                | 1031-A   |
| Idler wheels, type 102E- and 103-E.....            | 1026-A    | Telephone pickup coil, type 175-A.....                     | 1032-A   |
| Microscope, type 125-A.....                        | 1024-A    | <b>PRESTO DISCS AND NEEDLES</b>                            |          |
| Motor, type 145-A.....                             | 1026-A    | Green Seal discs.....                                      | 1033-4-A |
| Motor, type 146-A.....                             | 1026-A    | Oversize master discs.....                                 | 1033-4-A |
| Motor, type 147-A.....                             | 1026-A    | Professional cutting and<br>playing needles, disclube..... | 1033-4-A |
| Pickup and Compensator, type 151-A.....            | 1022-A    | Orange Seal discs.....                                     | 1035-6-A |
| Pickups, type 150-C and 150-D.....                 | 1026-A    | Blue Label discs.....                                      | 1035-6-A |
| Pulleys, motor drive, type 230-A, B, C, D.....     | 1026-A    | Monogram discs.....  | 1035-6-A |
|  |           | Commercial cutting and<br>playing needles, disclube.....   | 1035-6-A |

## INDEX to TYPE NUMBERS

|                        | Page      |   | Page      |
|------------------------|-----------|---|-----------|
| 1-A carrying case..... | 1007-8-A  | 5-A cutting head.....                     | 1026-A    |
| 1-C cutting head.....  | 1021-A    | 6-D, 6-E and 6-F recording turntable..... | 1015-16-A |
| 2-A carrying case..... | 1017-A    | 8-A and 8-B recording turntable.....      | 1013-14-A |
| 3-A cabinet.....       | 1019-20-A | 9-A and 9-B recording turntable.....      | 1018-A    |
| 4-A cabinet.....       | 1014-A    | 10-A turntable chassis.....               | 1020-A    |

# INDEX—Continued

|   | Page      |   | Page     |
|---|-----------|---|----------|
| 15A, 15-B and 15-C feed screw.....                          | 1025-A    | 171-A vertical damper.....  | 1026-A   |
| 20-A and 20-B time scale.....                               | 1025-A    | 175-A telephone pickup coil.....  | 1032-A   |
| 21-A time scale.....  | 1025-A    | 200-A amplifier system.....   | 1001-2-A |
| 26-B recording turntable.....                               | 1003-4-A  | 200-B amplifier system.....   | 1003-4-A |
| 28-A recording turntable.....                               | 1001-2-A  | 220-A grommets, motor mounting, set.....                                    | 1026-A   |
| 32-A, 32-B and 32-C feed screw.....                         | 1025-A    | 230-A, 230-B, 230-C, and 230-D motor pulley.....                            | 1026-A   |
| 40-A and 40-B preamplifier.....                             | 1030-A    | 231-A motor pulley.....   | 1026-A   |
| 42-A patching panel.....                                    | 1002-A    | 300-A recording equipment.....  | 1032-A   |
| 50-A and 50-B radio tuner.....                              | 1030-A    | 306-A, 308-A, 310-A 312-A and 316-A<br>orange seal discs.....               | 1035-A   |
| 62-A transcription turntable.....                           | 1019-20-A | 320-A sapphire cutting needle.....  | 1035-A   |
| 75-A, 75-B and 75-C recording turntable.....                | 1017-18-A | 330-A stellite cutting needle.....  | 1036-A   |
| 85-A, 85-B and 85-E recording amplifier.....                | 1029-A    | 340-A prestalloy cutting needle.....  | 1036-A   |
| 86-A control panel.....                                     | 1002-A    | 350-A and 350-B steel cutting needles.....                                  | 1036-A   |
| 86-B control panel.....                                     | 1003-4-A  | 400-A blower system.....  | 1027-A   |
| 87-A and 87-B recording amplifier.....                      | 1031-A    | 406-A blue label discs.....   | 1035-A   |
| 92-A mounting table.....                                    | 1003-A    | 408-A blue label discs.....   | 1035-A   |
| 93-A mounting table.....                                    | 1005-6-A  | 410-A blue label discs.....   | 1035-A   |
| 102-E idler wheel.....                                      | 1026-A    | 420-A sapphire playing needle.....  | 1036-A   |
| 103-E idler wheel.....                                      | 1026-A    | 430-A transcription playing needle.....                                     | 1036-A   |
| 104-A idler wheel.....                                      | 1026-A    | 440-A and 440-B red shank playing needles.....                              | 1036-A   |
| 105-A idler wheel.....                                      | 1026-A    | 450-A two ounce can disclube.....   | 1036-A   |
| 116-E cutter feed mechanism.....                            | 1026-A    | 501-A scratch filter.....   | 1022-A   |
| 125-A microscope.....                                       | 1024-A    | 502-A screwdriver.....  | 1020-A   |
| 127-A and 127-B rubber turntable tire.....                  | 1026-A    | 503-A spirit level.....   | 1020-A   |
| 128-A cutter feed mechanism.....                            | 1013-14-A | 505-A transformer.....  | 1020-A   |
| 130-A, 130-B and 130-C microphone mixer.....                | 1029-A    | 601-A diamond needle.....   | 1034-A   |
| 131-A, 131-B, 131-C and 131-D<br>counterbalance spring..... | 1026-A    | 603-A short cutting needles (duralumin shank).....                          | 1034-A   |
| 140-A re-recording turntable.....                           | 1032-A    | 604-A long cutting needles (duralumin shank).....                           | 1034-A   |
| 141-A re-recording pickup.....                              | 1032-A    | 606-A, 608-A, 610-A, 611-A, 612-A, 613-A<br>and 616-A Green Seal discs..... | 1034-A   |
| 142-A pickup pedestal.....                                  | 1032-A    | 621-A, 623-A and 627-A Master discs.....                                    | 1034-A   |
| 145-A motor and bracket.....                                | 1026-A    | 631-A pint Disclube.....  | 1034-A   |
| 146-A motor.....  | 1026-A    | 706-A, 708-A 710-A and 712-A<br>Monogram discs.....                         | 1035-A   |
| 147-A motor.....  | 1026-A    | 801-A conversion of I-B to I-C.....   | 1021-A   |
| 148-A motor.....  | 1026-A    | 805-A and 805B conversion feed screw.....                                   | 1025-A   |
| 150-C and 150-D pickup.....                                 | 1026-A    | 806-A resharpening sapphire.....  | 1034-A   |
| 151-A pickup and compensator.....                           | 1022-A    | 806-B resharpening sapphire.....  | 1035-A   |
| 160-A and 160-B automatic equalizer.....                    | 1023-A    | 807-A resharpening stellite.....  | 1036-A   |
| 170-A and 170-B vertical damper.....                        | 1026-A    |   |          |

**PRESTO RECORDING CORPORATION**  
NEW YORK, U. S. A.

# PRESTO MODEL "A" RECORDER



**T**HE model A recorder is composed of the finest grade of equipment throughout. Proof of its exceptional performance is the fact that it is used extensively by all three of the major broadcasting networks as well as the largest phonograph record manufacturers and commercial transcription studios. It makes lateral recordings that reproduce the widest frequency

range with the lowest background noise level possible to obtain under practical operating conditions.

The model A equipment forms two complete recording channels capable of recording continuously, recording two different 15 minutes transcriptions simultaneously or making two duplicate transcriptions of the same 15 minute program.

## SPECIFICATIONS

**Standard Equipment:** Includes one 28-A turntable unit and one 200-A amplifier unit.

The 28-A turntable unit is composed of two 8-A recording turntables mounted in a 92-A table equipped with 86-A control panel. The 200-A amplifier unit contains one 50-B radio tuner, two 85-B recording amplifiers, three 40-B pre-amplifiers, one 130-B mixing panel, one 42-A patching panel and associated power supplies mounted and wired in a 68" fully enclosed relay rack. **Accessories required for the operation of this recorder include microphones, discs and needles.)**

**Frequency Response:** Amplifiers, 30 to 15,000 cycles; cutting heads, 50 to 8,000 cycles; response in above

ranges uniform within 2 db. Pickups, for checking purposes only, 70 to 7,500 cycles.

**Noise Level:** Total of all electrical and mechanical noise, originating in equipment over 50 db below maximum useful sound level reproduced from the recordings.

**Impedances:** Inputs to pre-amplifiers 50/200/500 ohms. Input and output impedances of recording amplifiers 500 ohms. Cutters and pickups, 500 ohms. Radio tuner output, 500 ohms.

**Gain:** Pre-amplifiers, 55 db. Recording amplifiers, 90 db.

**Radio Tuner:** Band pass TRF type, tuning range 500 to 1750 kc. Average output level 0 db. Selectivity at 1,000 kc., minus 5 db at 18 kc. limits.

**Power Output:** Recording amplifiers, 10 watts.

**Tube Complement:** Pre-amplifiers, 2 type 1221. Recording amplifiers 1st stage 2 type 1221; 2nd stage 2 type 6-C-5-G; 3rd stage 2 type 2A3's P.P.; rectifier type 5Z3. Radio tuner 1st R-6-D-6; 2nd R-6-D-6; 3rd R-6-D-6; D type 76; A type 76; AVC-76. Radio tuner receives plate power from recording amplifier chassis.

**Controls:** The 86-A control panel contains a volume indicator meter, switches for changing cutters and pickups, a selector switch for changing the peak frequency of the equalizer, a selector switch for connecting the cutting heads to two separate lines or in parallel on a single line or alternately on a single line and a volume control. Amplifier controls include the radio tuner dial, power switch and volume control; selector switch for connecting the amplifiers to play or record from the radio, playback records, record from the microphone or operate as public address system. Separate volume controls and volume indicator meters are supplied on each amplifier and three mixer controls on the outputs of the pre-amplifiers.

The 42-A patching panel contains 24 double jacks for connections to various program lines. Connections for the turntables, microphones and power leads are brought out at the right side of the rack.

**Microscope.** Magnification, 40 power, equipped with extension arm and light. Field in focus, 7 grooves.

**Cutting Pitch:** Standard feedscrews cut 112 lines an inch, inside-out. Feedscrews for 96 or 120 lines an inch inside-out, or outside-in substituted at purchaser's request.

**Speed Accuracy:** Within .4% at both 78 and 33 $\frac{1}{3}$  RPM. Regulation within a single revolution is accurate to .2%.

**Power Requirements:** Standard equipment draws 500 watts on a 110 volt, 60 cycle line. Available for other voltages and frequencies without additional charge.

**Operating Clearances:** Overall clearance required for 28-A turntable unit; L-64" X D-32" X H-53" (163 X 81 X 135 cm.) The 92-A table mounts the turntables 44" (112 cm) above the floor level for operating from a standing position. Amplifier dimensions are W-23" X D-16" X H-68" (58 X 41 X 173 cm.).

**Finish:** The 92-A table is finished in smooth gray enamel, all metal parts in gray crackle enamel with chromium trim.

**Shipping Dimensions and Weights:** The complete model A recorder is packed for shipment in six cases. No's 1 and 2 contain the cutting mechanisms. Each measures 26" x 19" x 15" (66 x 48 x 38 cm.) and weighs 20 lbs. (9 kg.) No. 3 contains the top of the 92-A table and the turntable chasses, measures 57" x 36" x 20" (145 x 91 x 51 cm.) and weighs 190 lbs. (86 kg.) No. 4 contains the table legs and hardware measures 33" x 11" x 11" (84 x 28 x 28 cm.) weighs 40 lbs. (18 kg.) No. 5 contains the



**TYPE 200-A AMPLIFIER UNIT**

microscopes, pickup heads and idler wheels, measures 16" x 16" x 12" (41 x 41 x 31 cm.) weighs 15 lbs. (7 kg.). No. 6 contains the amplifier unit, measures 22" x 20" x 74" (56 x 51 x 188 cm.) and weighs 90 lbs. (41 kg.).

| TYPE  | DESCRIPTION    | PRICE      | CODE  |
|-------|----------------|------------|-------|
| 28-A  | Turntable Unit | \$2,140.00 | AMORE |
| 200-A | Amplifier Unit | 1,282.00   | AMANK |

**PRESTO RECORDING CORPORATION**  
NEW YORK, U. S. A.



# Presto Model "B" Recorder



**T**HE MODEL B recorder includes two 16", dual speed recording turntables and a single amplifier channel suitable for recording continuously on records up to the 17 $\frac{1}{4}$ " master size or for re-recording complete 15 minute programs.

The 26-B turntable equipment is lighter in construction and not as versatile as the 28-A unit but is capable of making recordings that are equally acceptable for all practical uses. The tables are equipped with the necessary facilities for making commercial recordings including auto-

matic equalizers, vibration dampers, spiralling feed screws and time scales.

The 200-B amplifier system is similar in appearance to the 200-A system. Space is available to install the additional equipment included with the 200-A system if desired.

The model B recorder is recommended to stations and studios that wish to make recordings of professional quality with a minimum investment in equipment.

## SPECIFICATIONS

**Standard Equipment:** The model B recorder consists of one 26-B turntable unit and one 200-B amplifier unit. The 26-B turntable unit contains one 6-E and one 6-F recording turntable mounted in a 92-A table equipped with 86-B control panel. The 200-B amplifier unit contains one 50-B radio tuner, one 85-B recording amplifier, two 40-B preamplifiers, one 130-B mixing panel, one 42-A patching panel and associated power supplies mounted and wired in a 68" fully enclosed relay rack. **Accessories necessary to operate the equipment include microphones, discs and needles which must be ordered separately.**

**Frequency Response:** Amplifiers, 30 to 15,000 cycles; cutting head 50 to 8,000 cycles. Response in above ranges

uniform within 2 db. Pickups, for checking purposes only, 70 to 7,500 cycles.

**Noise Level:** Total of all electrical and mechanical noise, originating in equipment, over 45 db below maximum useful sound level reproduced from the recordings.

**Speed Accuracy:** Within .4% at both 78 and 33 $\frac{1}{3}$  RPM. Regulation within a single revolution accurate to .2%.

**Cutting Pitch:** Standard feedscrews cut 112 lines an inch, inside-out. Feedscrews for 96 or 120 lines an inch inside-out or outside-in substituted at purchaser's request.

**Tube Complement:** Pre-amplifier, two 1221's. Recording amplifier, 1st stage, two 1221's. 2nd stage two 6-C-5-G.

3rd stage, two 2A3's P.P. Rectifier, type 5Z3. Radio tuner, 1st-2nd and 3rd R.F.—6D6; D, 1st A and AVC 76's. Power for the pre-amplifier and plate power for the 50-B radio tuner are furnished by the 85-B amplifier chassis.

**Impedances:** Input to pre-amplifiers, 50/200/500 ohms. Input and output impedances of recording amplifier, 500 ohms. Impedance of cutters and pickups, 500 ohms. Radio tuner, 500 ohms.

**Gain:** Pre-amplifiers, 55 db. recording amplifier 90 db.

**Power Output:** Recording amplifier 10 watts.

**Radio Tuner:** Band-pass TRF type, tuning range 500 to 1750 kc., average output level 0 db.

**Controls:** The 86-B control panel contains a volume indicator meter, switches transferring the amplifier and automatic equalizer to either cutter and pickup for continuous recording or re-recording, a selector switch for changing the peak frequency of the equalizer and a volume control. Other controls include radio tuner dial, power switch and volume control, recording amplifier volume control, selector switch for connecting the amplifier to play or record from the radio, playback records, record from the microphones or operate as a public address system and two mixer controls on the outputs of the pre-amplifiers. The 42-A patching panel contains 24 double jacks. Connections for the turntables, microphones and power leads are brought out at the right side of the rack.

**Power Requirements:** Standard equipment draws 180 watts on a 110 volt, 60 cycle line. Available for, 220/240 volts, 50 or 60 cycles (not both) at no additional cost.

**Operating Clearances:** Overall clearance required for operating the 26-B turntable are L-52" x D-32" x H-50". (132x81x127 cm.) The 92-A table mounts the turntables 44" (112 cm.) above the floor level for operating from a standing position.

Amplifier dimensions are W-23" x D-16" x H-68". (58 x 41x173 cm.)

**Finish:** The 92-A table is finished in gray enamel. All metal parts are finished in gray crackle enamel with chromium trim.

**Shipping Dimensions & Weight:** The complete model B recorder is packed for shipment in 3 cases and 1 carton. No. 1 contains the top of the 92-A table and the turntable chassis, measures 67"x39"x19" (170x99x48 cm.) and weighs 165 lbs. (74 kg.). No 2 contains the table legs and hardware, measures 11"x11"x32" (28x28x81 cm.) and weighs 40 lbs. (18 kg.). No. 3 (carton) contains the pickup heads and idler pulleys, measures 10"x10"x7" (25x25x18 cm.) weighs 15 lbs. (7 kg.). No. 4 case contains the ampli-



**TYPE 200-B AMPLIFIER UNIT**

fier unit, measures 29"x22"x74" (74x56x188 cm.) weighs 90 lbs. (41 kg.).

| TYPE  | DESCRIPTION     | PRICE      | CODE  |
|-------|-----------------|------------|-------|
| 26-B  | Turntable unit. | \$1,395.00 | BEARE |
| 200-B | Amplifier unit  |            | BISAP |
|       |                 | 938.00     |       |

**PRESTO RECORDING CORPORATION**  
NEW YORK, U. S. A.

# PRESTO MODEL "F" RECORDER



**A** MEDIUM priced recording installation for radio stations that record half hour programs for delayed broadcasts, schools that record half and one hour educational programs and personal recording studios that require facilities for duplicating records or re-recording 15 minute transcriptions on 78 RPM records

that can be played in the home . . . Equipped with the highest quality Presto cutting heads and an amplifier designed especially for recording, the model F recorder may be expected to make records comparable in quality to those made on the highest priced equipment.

## SPECIFICATIONS

**Standard Equipment:** The model F recorder consists of two 75-A 16" recording turntables and an 87-C amplifier completely wired and mounted in the 93-A table.

The 16", dual speed turntables are equipped with Presto high fidelity cutting heads, vertical dampers, time scales and an underneath cutter feed mechanism that may be adjusted instantly to cut from outside-in or inside-out.

The amplifier includes a two microphone mixer and high and low frequency equalizers which make it possible to produce recordings with exceptionally low background noise. **Accessories necessary to operate the recorder include microphones, loudspeaker, discs and needles which must be ordered separately.**

**Frequency Response:** Amplifier, adjusted for flat response, 30 to 10,000 cycles. Turned to the right the treble control produces a maximum peak of 17 db. at 6,500 cycles. Turned to the left it acts as a scratch filter giving a maximum attenuation of 20 db. at 5,000 cycles. The bass control produces a maximum peak of 20 db. at 80 cycles. Cutting head response 50 to 8000 cycles. Response in above ranges is uniform within 2 db. Pickups, for checking purpose only, 70 to 7500 cycles.

**Noise Level:** Total of all electrical and mechanical noise, originating in equipment, over 45 db below maximum useful sound level reproduced from the recordings.

**Tube Complement:** First stage 2 type 6-S-J-7's, second stage 6-N-7, third and fourth stages 6-C-8-G's, power stage 2 A3's P.P. rectifier type 5Z3.

**Impedances:** Microphone inputs 50, 200 or 500 ohms as specified by purchaser. Line input jack 500 ohms. Amplifier output 8 ohms. Cutter 8 ohms. Pickup 500 ohms.

**Gain:** Amplifier, adjusted for flat response, 120 db.

**Power Output:** Amplifier, 10 watts.

**Controls:** Amplifier controls include two micro-

phone input gain controls, playback volume control and continuously variable treble and bass equalizer controls, a switch for changing instantly between cutting heads and pickups and a selector switch which connects the amplifier for recording, playback or public address operation. Amplifier panel also contains a volume indicator meter, telephone line input jack, monitor jack, two turntable receptacles, two microphone receptacles and a power switch.

**Speed Accuracy:** Within .4% at both 78 and 33 $\frac{1}{3}$  RPM. Regulation within a single revolution is accurate to .2%.

**Cutting Pitch:** 112 lines an inch, inside-out or outside-in, permitting a full 15 minute recording on one side of a 16" disc.

**Power Requirements:** Standard equipment draws 250 watts on a 110 volt, 60 cycle line. Available for 220/240 volts or 50 cycles at no additional cost.

**Finish:** The 93-A table and amplifier panel are finished in smooth gray enamel. Turntables are finished in gray crackle enamel with chromium trim.

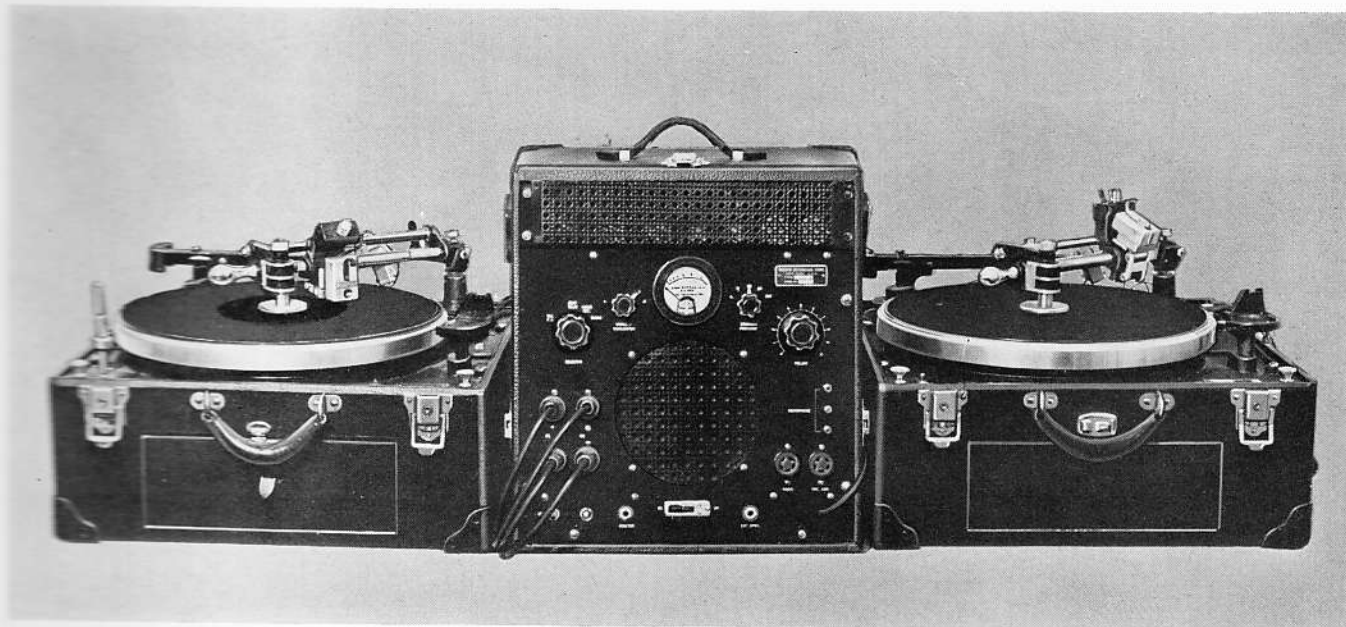
**Operating Clearances:** Overall clearances required for operating recorder 67x19x52 (171x48 x132). The 93-A table mounts the turntables 33" (84 cm.) above the floor level suitable for operation from a sitting position. Amplifier panel is hinged to move forward for tube replacement.

**Shipping Dimensions and Weight:** The complete Model F recorder is packed for shipment in one case measuring 71x23x56" (181x59x143 cm.) weighing 300 lbs. (135 kg.).

| TYPE | DESCRIPTION                     | PRICE      | CODE  |
|------|---------------------------------|------------|-------|
| F-1  | Complete recording installation | \$1,075.00 | FENCE |

**PRESTO RECORDING CORPORATION**  
NEW YORK, U. S. A.

# PRESTO MODEL "C" RECORDER



**T**HE original Presto portable recorder developed in 1936 and still giving dependable service to hundreds of users. Now greatly improved in performance and operating convenience, the model C recorder is recommended for motion picture producers, industrial concerns, radio stations and others that are required to

make high quality recordings outside of the studio. Mounted in convenient carrying cases and equipped with connecting cables, it may be set up for operation in less than five minutes. Records continuously on records up to the 17 $\frac{1}{4}$ " master size and re-records phonograph records or complete 15 minute transcriptions.

## SPECIFICATIONS

**Standard Equipment:** The model C-1 recorder includes one 6-D recording turntable mounted in the 1-A reinforced, leatherette carrying case, one 85-E portable recording amplifier with manual equalizer and one 40-A portable pre-amplifier. The model C-2 recorder is identical except that it includes two 6-D recording turntables. Accessory equipment which may be added to the model C recorder, if desired, includes: the 160-A or 160-B automatic equalizer, the 15-spiralling feedscrew, the 20-B time scale and the 50-A radio tuner. **Accessories necessary to operate the recorder include microphone and stand, discs and needles which must be ordered separately.**

**Frequency Response:** Amplifiers, 30 to 15,000 cycles; cutting heads, 50-8,000 cycles; Response in above ranges uniform within 2 db. Pickups, for checking purposes only, 70 to 7,500 cycles.

**Noise Level:** Total of all electrical and mechanical noise, originating in equipment, over 45 db below maximum useful sound level reproduced from recordings.

**Impedances:** Input to preamplifier, 50/200/500 ohms. Input and output impedances of recording amplifier, 500 ohms. Cutters and pickups 500 ohms.

**Gain:** Pre-amplifier, 55 db. Recording amplifier 90 db.

**Power Output:** Recording amplifier, 10 watts.

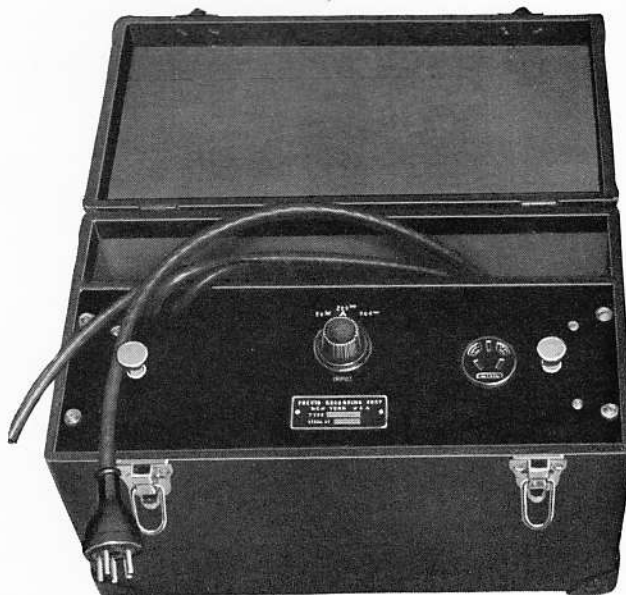
**Tube Complement:** Preamplifier, 2 type 1221. Recording amplifier, 1st stage 2 type 1221, 2nd stage 2 type 6-C-5-G, 3rd stage 2 type 2A3's PP, rectifier type 5Z3. Power for the 40-A pre-amplifier is supplied by the 85E amplifier chassis.

**Controls:** Pre-amplifier panel has selector switch for using 50, 200 or 500 ohm microphone. Recording amplifier panel contains a selector switch for playing or recording from the radio, playing recordings, recording from the microphone or public address operation, a selector switch for changing the peak frequency of the equalizer, an equalizer slope control, master volume control, changeover switch for cutters and pickups, receptacles for connecting two turntables, preamplifier and radio tuner, external speaker and monitor jacks and a power switch.

**Power Requirements:** Type 6D turntables draw 60 watts each and the 85E and 40-A preamplifier draw 120 watts total from a 110 volt 60 cycle line. Available for 220 or 240 volts, 50 or 60 cycles at no additional cost.

**Cutting Pitch:** Standard feedscrews cut 112 lines an inch, inside-out. Feedscrews for 96 or 120 lines an inch outside-in or inside-out substituted at purchaser's request.

**Speed Accuracy:** Within .4% at both 78 and 33 $\frac{1}{3}$  RPM. Regulation within a single revolution is accurate to .2%.



**TYPE 40-A PORTABLE PREAMPLIFIER**

**Operating Dimensions and Weights:** With cases closed, 6-D turntable measures 20 $\frac{1}{4}$ "x20"x15" (52x51x38 cm.), weighs 67 lbs. (30 kg.); 85E amplifier measures 17"x13"x18 $\frac{1}{2}$ " (43x33x47 cm.), weighs 53 lbs. (24 kg.); 40-A preamplifier measures 15"x8"x10" (38x20x25 cm.), weighs 18 lbs. (8 kg.).

**Finish:** Carrying cases, black leatherette, metal parts black enamel with chromium trim.

**Shipping Dimensions and Weights:** The 6-D table is packed for shipment in a case measuring 36"x28"x19" (92x71x48 cm.), weighing 95 lbs. (43 kg.). The 85-E amplifier is packed in a case measuring 30"x22"x24" (76x56x61 cm.) weighing 87 lbs. (39 kg.). The 40-A preamplifier is packed in a case measuring 27"x21"x12" (69x53x31 cm.), weighing 30 lbs. (14 kg.).

| TYPE | DESCRIPTION       | PRICE      | CODE  |
|------|-------------------|------------|-------|
| C-1  | Complete recorder | 819.00     | CABBY |
| C-2  | Complete recorder | \$1,219.00 | CALEX |

**PRESTO RECORDING CORPORATION**  
NEW YORK, U. S. A.

# PRESTO MODEL "Y" RECORDER



**T**HE PRESTO model Y recorder fills the need for a 16" transcription recording and playback equipment which is extremely portable and yet capable of producing high grade recordings. It makes continuous 15 minute, 33 $\frac{1}{3}$  RPM electrical transcriptions of sufficiently good quality to be used by broadcasting stations. It also makes 78 RPM recordings on 6", 8", 10" or 12" discs and may be used to cut 11 $\frac{1}{2}$ ", 13 $\frac{1}{2}$ " and 17 $\frac{1}{4}$ " master recordings from which commercial pressings are produced. In addition to recording, the model Y gives excellent reproduction of both electrical transcriptions and phonograph records and is widely used for auditioning recorded radio programs to prospective sponsors. As a public address system it will provide sound for audiences up to 500 persons.

Among the important features of the model Y recorder are:

1. The exclusive Presto rubber-rimmed-turntable driven directly by a steel pulley on the motor shaft, a simple, foolproof drive system that eliminates vibration and holds

the turntable speed absolutely constant. Maintenance is negligible. There are only two moving parts which need replacement about once a year.

2. A lever changes the turntable speed instantly without stopping the table or removing the record.

3. A lever adjusts the cutting mechanism to cut either from the outside of the disc toward the center or from the center out.

4. An off-center nipple in the turntable permits cutting an eccentric groove at the finish of the recordings to operate automatic record changers.

5. A cam lever lowers the cutting head gently on the record preventing accidental damage to sapphire needles.

6. A vibration damper attached to the cutting head suppresses vertical modulation in the record groove and eliminates variation in groove depth due to surface irregularities in the disc. The damper also eliminates flutter when the records are played with pickups having a resonant peak in the low frequency range.

7. The cutting arm may be unlocked from the feed mechanism to cut spiral starting and runout grooves.
8. A time scale on the cutting arm shows the starting point for each size record and elapsed recording time at both 78 and 33 $\frac{1}{3}$  RPM.
9. The cutting head feed mechanism is located beneath the turntable where it is protected from dust or accidental damage. The parts of this mechanism are hand

finished and fitted and its performance is equal in every way to the overhead lathe type mechanism commonly used.

10. The recording amplifier includes a two microphone mixer, high and low frequency equalizers and a change-over switch for continuous recording or re-recording. The amplifier and loudspeaker fit together to carry in a single case.

## SPECIFICATIONS

**Standard Equipment:** The model Y-2 recorder consists of one 75-A recording turntable and one 87-A recording amplifier and loudspeaker. The model Y-4 recorder consists of one 75-A recording turntable and one 87-B recording amplifier. The 87-B amplifier is identical with the 87-A except that it includes input transformers for low impedance microphones. **Accessories necessary to operate the recorder include microphones, stands, discs and needles which must be ordered separately.**

**Frequency Response:** Amplifier, adjusted for flat response, 30 to 10,000 cycles. Turned to the right the treble control produces a maximum peak of 17 db at 6,500 cycles. Turned to the left it acts as a scratch filter giving a maximum attenuation of 20 db at 5,000 cycles. The bass control produces a maximum peak of 20 db at 80 cycles. Cutting head response 50 to 8,000 cycles. Response in above ranges is uniform within 2 db. Pickup, for checking purposes only, 70 to 7,500 cycles.

**Noise Level:** Total of all electrical and mechanical noise, originating in equipment, over 45 db below maximum useful sound level reproduced from recordings.

**Tube Complement:** First stage 2 type 6-S-J-7's, 2nd stage 6-N-7, 3rd and 4th stages 6-C-8-G's, power stage 2-A-3's P.P., rectifier 5-Z-3.

**Impedances:** Microphone inputs, 87-A amplifier, 100,000 ohms; 87-B amplifier 50, 200 or 500 ohms as specified by purchaser. Line input jack 500 ohms. Amplifier output 8 ohms. Pickup 500 ohms. Cutter 8 ohms.

**Gain:** Amplifier, adjusted for flat response, 120 db.

**Power Output:** Amplifier, 10 watts.

**Controls:** Amplifier controls include two microphone input

gain controls, playback gain control and continuously variable treble and bass equalizer controls, a switch for changing instantly between cutting heads and pickups, (when two turntables are used) and a selector switch which connects the amplifier for recording, playback or public address operation. Amplifier panel also contains a volume indicator meter, telephone line input jack, monitor jack, two turntable receptacles, two microphone receptacles and a power switch.

**Loudspeaker:** Ten inch, permanent magnet, dynamic with enclosed baffle.

**Speed Accuracy:** Within .4% at both 78 and 33 $\frac{1}{3}$  RPM. Regulation within a single revolution is accurate to .2%.

**Cutting Pitch:** 112 lines an inch, inside-out or outside-in permitting a full 15 minute recording on one side of a 16" disc.

**Power Requirements:** Standard equipment draws 180 watts on a 110 volt, 60 cycle line. Available for 220/240 volts or 50 cycles at \$10 additional cost.

**Mounting:** Re-inforced carrying cases covered in gray airplane luggage cloth equipped with chromium plated locks and leather handles. Metal parts of recorder gray enamel with chromium trim.

**Operating Weights & Dimensions:** Turntable case closed 20 $\frac{1}{2}$ "x11"x19" (52x28x50 cm.). Weight 44 lbs. (20 kg.). Amplifier case closed 23 $\frac{1}{2}$ "x12"x20" (60x31x51 cm.). Weight 47 lbs. (21 kg.).

**Shipping Weights & Dimensions:** Turntable, one case measuring 33"x25"x14" (84x62x35 cm.), weighing 68 lbs. (31 kg.). Amplifier, one case measuring 35 $\frac{1}{2}$ "x26"x16" (90x66x41 cm.), weight 78 lbs. (35 kg.)

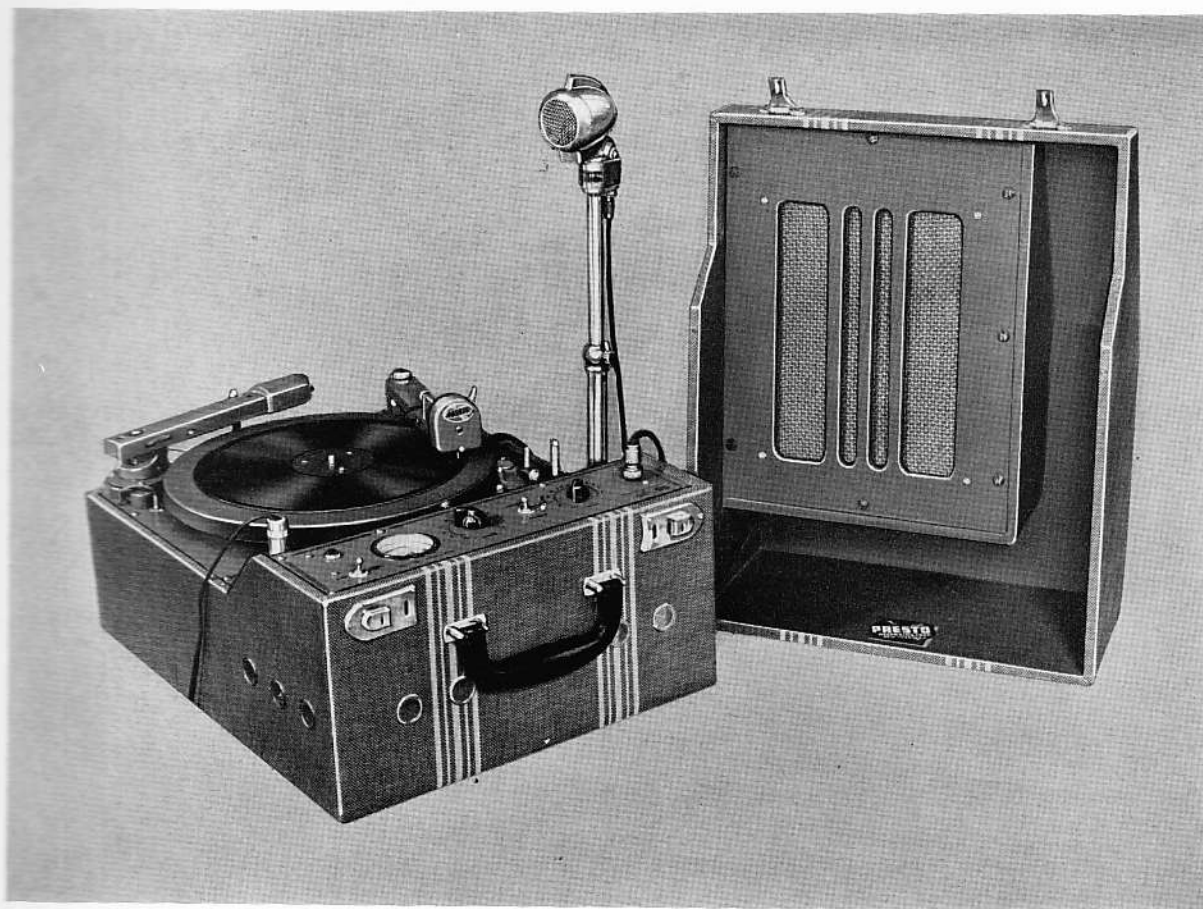
| TYPE | DESCRIPTION | PRICE    | CODE  |
|------|-------------|----------|-------|
| Y-2  | Recorder    | \$595.00 | YACHT |
| Y-4  | Recorder    | 625.00   | YACRE |

NOTE: Order should specify Amplifier Input Impedance

**PRESTO RECORDING CORPORATION**  
NEW YORK, U. S. A.



# PRESTO MODEL "K" RECORDER



A COMPLETE portable recorder in a single unit. Exceptionally light and compact, the model K recorder is ideally suited to the needs of teachers of speech, music and dramatics, as well as professional actors and musicians, who require an instrument that can be carried easily and set up for operation in a few minutes' time.

The model K makes 6, 8, 10 and 12 inch records, plays back all types of phonograph records and operates as a voice amplifying system to serve audiences of about 500 persons.

Although it is the lowest priced complete Presto recorder it contains many valuable features of the more expensive instruments such as: 1) a magnetic cutting head and pickup, found only in high grade equipment, 2) a full sized, six tube amplifier chassis, 3) a safety cam lever for lowering the cut-

ting head, preventing accidental damage to sapphire needles, 4) a detachable, dynamic loudspeaker which may be operated at any desired distance from the recorder, 5) a cutter feed mechanism located beneath the turntable where it is not exposed to dust or accidental damage, and 6) the exclusive Presto rubber-tired turntable driven directly by a steel pulley on the motor shaft, a drive system that eliminates rubber idler wheels, rubber pulleys, belts and other parts subject to rapid wear.

These features, not found in the average recorder, greatly simplify the operation of the model K for non-technical users. They reduce operating costs by preventing the spoilage of discs and needles and help the user to obtain consistently high quality recordings.

# SPECIFICATIONS

**Standard Equipment:** The model K-6 recorder consists of a 12", single speed (78 RPM) recording turntable equipped with a magnetic cutting head, cutter feed mechanism, magnetic pickup, four stage recording amplifier and loudspeaker, mounted in a single carrying case, and a type T-22-X crystal microphone with adjustable floor stand. The model K-7 is identical except that the turntable operates at both 78 and 33 $\frac{1}{3}$  RPM. Only accessories necessary to operate the recorder are **discs and needles which must be ordered separately.**

**Frequency Response:** Amplifier, 50 to 8,000 cycles; cutting head, 80 to 5,000 cycles; pickup, 80 to 5,000 cycles. Response in above ranges uniform within 2 db.

**Noise Level:** Total of all electrical and mechanical noise, originating in equipment, over 35 db below maximum useful sound level reproduced from recordings.

**Speed accuracy:** Within .4%. Regulation within a single revolution is accurate to .2%.

**Gain:** Amplifier, 110 db.

**Power Output:** Amplifier, 3 watts.

**Controls:** Amplifier control panel contains a volume indicator meter, tone control, dual volume

control and switch for recording, playback and public address and a microphone receptacle. Turntable chassis contains jacks for connecting the loudspeaker, monitoring headphones and a radio set or external pickup.

**Tube Complement:** First stage 6F5, second stage 6SF5, third stage 6N7, fourth stage 2-45's P.P., rectifier 1-80.

**Cutting Pitch:** Feed mechanism cuts 100 lines an inch, inside-out or outside-in as specified by purchaser.

**Power Requirements:** Standard equipment draws 120 watts on a 110 volt, 60 cycle line. Available for other voltages and frequencies at additional cost. See footnote.

**Finish:** Carrying case is covered with gray airplane cloth. Metal parts of recorder are finished in smooth gray enamel with lacquered brass trim.

**Operating Dimensions and Weight:** With case closed 19 $\frac{1}{2}$ "x15 $\frac{1}{2}$ "x14" (50x39x36 cm.), weight 46 lbs., (21 kg.)

**Shipping Dimensions and Weight:** The K-6 recorder is packed for shipment in a single case measuring 32"x21"x17" (81x53x43 cm.) weighing 59 lbs. (27 kg.). Accessories such as microphone, stand and discs, (if ordered), are shipped in separate cartons.

| MODEL | DESCRIPTION       | PRICE    | CODE  |
|-------|-------------------|----------|-------|
| K-6   | Complete recorder | \$215.00 | KARIN |
| K-7   | Complete recorder | 230.00   | KATOW |

NOTE: Add \$10.00 to the price of the model K recorder for adapting equipment to operate on 110 volts, 50 cycles; 220 volts, 60 cycles; 220 volts, 50 cycles; or 240 volts 50 cycles.

**PRESTO RECORDING CORPORATION**  
NEW YORK, U. S. A.

# PRESTO 8-A and 8-B RECORDING TURNTABLES



A PRECISION instrument embodying the finest materials and workmanship throughout, designed in collaboration with engineers of the largest recording studios to include all of the operating conveniences necessary to produce consistent, high quality work.

Added weight and size in the turntable, turntable bearing, mounting base and overhead mechanism serve to

keep this equipment in perfect operating condition over long periods without adjustment, a feature of primary importance in busy recording studios.

The 8-A turntable records the widest frequency range with the lowest background noise obtainable on lateral recordings. It is particularly recommended to studios making master recordings for the production of commercial pressings.

## SPECIFICATIONS

**Standard Equipment:** The 8-A recorder consists of a turntable, motor drive system and overhead cutting mechanism mounted on a cast iron base equipped with shockproof mountings. The 128-A cutting mechanism includes the 1-C high fidelity cutting head, 15-B spiralling feed-screw, 20-A time scale, 170-B vertical damper and 160-A automatic equalizer. Also included are the 125-A microscope and 150-C pickup. Accessories necessary to operate the 8-A table include recording amplifier, microphone, discs and needles. The 8-B recorder consists of the 8-A chassis mounted in the 4-A cabinet.

**Turntable:** Cast iron, accurately machined and dynamically balanced, weight 20 lbs., equipped with a hardened steel shaft which revolves on a single ball bearing at the base of a bronze shaft well. Provision is made for tightening the bearing to compensate for wear.

**Drive System:** A heavy duty, self-starting synchronous motor applies power to the inside rim of the turntable through a steel pulley and two specially designed rubber idler wheels, one for 78 RPM and the other for 33 $\frac{1}{3}$  RPM. The speed shift lever operates the motor switch and engages the idler wheels. Provision is made for locking the speed shift lever in place. Adjustable stops regulate the pressure against the idler wheels.

**Mounting Base:** Cast iron, weight 60 lbs., provided with four shockproof mountings to attenuate vibration from external sources.

**Cutting Mechanism:** The 128-A cutter mechanism consists of a heavy machined guide bar which swings from a post mounted on the base. A flange which fits over the turntable shaft drives the feedscrew through a worm and

gear. The entire mechanism moves to a rest at the rear of the turntable when not in use. Provision is made for accurately adjusting the alignment of the cutting mechanism with the turntable and base. The spiralling attachment makes it possible to space grooves up to 1/2" apart at convenient crank speeds. The time scale is four-sided showing elapsed recording time at pitches of 96, 104, 112 or 120 lines an inch.

**Cutting Head Carriage:** The cutting head is mounted on an apron, hinged to permit a rough adjustment of the cutting angle. This adjustment is locked by means of a thumbscrew. Fine adjustment of the cutting angle is made by the large thumbscrew at the top of the carriage. The cutting head may be swung outward to change cutting needles and replaced without disturbing the cutting angle. Levers are provided for lowering the cutting needle on the disc and for engaging the carriage with the feed screw. The vertical damper is mounted on a rocker arm beneath the carriage. Feedscrews can be changed quickly by loosening one thumbscrew. The depth of cut is adjusted by a counterbalance spring.

**Microscope:** Magnification 40 power, area in focus, 7 grooves, equipped with rigid cast iron mounting bracket, lamp and reflector.

**Frequency Response:** Cutting head 50 to 8,000 cycles, pickup 70 to 7,500 cycles.

**Noise Level:** Mechanical noise originating in equipment over 50 db below maximum useful sound level reproduced from recordings.

**Impedances:** Cutting head 500 ohms, pickup 500 ohms.

**Cutting Pitch:** Standard feedscrew cuts 112 lines an inch inside-out. Feedscrews for 96, 104 or 120 lines an inch inside-out or outside-in substituted at purchaser's request.

**Speed Accuracy:** Within .4% at both 78 and 33 1/3 RPM. Regulation within a single revolution accurate to .2%.

**Power Requirements:** Turntable motor draws 100 watts from a 110 volt 60 cycle line. Available for 50 cycles or 220 volts at no additional charge.

**Operating Clearances:**

Overall clearance necessary for operating 8-A chassis: W-27" x D-27" x H-18". (69 x 69 x 46 cm.).

Mounting dimension of base: 20" x 20". (51 x 51 cm.).

Operating clearances for 8-B table: H-53" x W-27" x D-27". (135 x 69 x 69 cm.).

The 4-A cabinet mounts the turntable 44" (112 cm.) above floor level, suitable for operating from a standing position.

**Finish:** The 4-A cabinet is finished in smooth gray enamel. Metal parts of the 8-A equipment are finished in gray crackle enamel with chromium trim.

**Shipping Dimensions & Weight:** The complete model 8-A is packed for shipment in two cases. No. 1 contains the cutting mechanism. Measures (32"x20"x16 1/2") (81x51x42 cm.), weighs 20 lbs. (9 kg.).

No. 2 contains the 8-A panel and turntable complete. Measures 31"x26 1/2"x16" (79x67x41 cm.), weighs 130 lbs. (59 kg.).

The 4-A cabinet is packed in one case. Measures 47"x29"x29" (119x74x74 cm.), weighs 70 lbs. (32 kg.).



| TYPE | DESCRIPTION                   | PRICE     | CODE  |
|------|-------------------------------|-----------|-------|
| 8-A  | Recording turntable chassis   | \$ 945.00 | ALLEX |
| 8-B  | Recording turntable & cabinet | 1,030.00  | ALBAB |

**PRESTO RECORDING CORPORATION**  
NEW YORK, U. S. A.

# PRESTO 6-D, 6-E and 6-F Recording Turntables



**O**VER 1500 Presto 6-D recording turntables are now in operation in broadcasting stations and instantaneous recording studios. Although it is lighter in construction and lacks some of the refinements of the more expensive turntables, it contains all of the basic equipment necessary to make recordings of excellent quality. The soundness of its design is proven by years of satisfactory service.

The turntable and mounting base of the 6-D recorder are made of cast aluminum making it light enough for field service. It is equally satisfactory for permanent mounting in fixed installations.

A pocket is provided in the I-A mounting case for carrying the cutting head and mounting, needles and spare parts. Provision is made for locking all parts in place during transportation.

## SPECIFICATIONS

**Standard Equipment:** The 6-D recording turntable consists of a turntable, motor drive system and overhead cutting mechanism mounted on a cast aluminum base. The 116-E cutting mechanism includes the I-C high fidelity cutting head,

32-B feedscrew, and 170-A vertical damper. These are mounted in the I-A carrying case. The 6-E table is similar to the 6-D table except that it includes the 160-A automatic equalizer, 15-B spiralling feedscrew and 20-B time scale. The 6-F

table is similar to the 6-E but includes only the slider unit for the automatic equalizer and is intended to be used as a second table with the 6-E.

**Turntable:** Cast aluminum, accurately machined and dynamically balanced, weight 10 lbs. equipped with a hardened steel shaft which revolves on a single ball bearing at the base of a bronze shaft well.

**Drive System:** A self-starting, synchronous motor applies power at the inside rim of the turntable through a steel pulley and two rubber idler wheels, one for 78 RPM, the other for 33 $\frac{1}{3}$  RPM. The speed shift lever operates the motor switch and engages the idler wheels. Adjustable stops regulate the pressure against the idler wheels.

**Mounting Base:** Cast aluminum heavily ribbed to combine rigidity with light weight.

**Cutting Mechanism:** The 116-E cutter mechanism swings from a post mounted on the turntable base. A flange which fits over the turntable shaft drives the feedscrew through a worm and gear. The entire mechanism moves to a rest at one side of the turntable when not in use. Provision is made for accurately adjusting the alignment of the cutting mechanism with the turntable and base. The spiralling feedscrew, as furnished with the 6-E and F tables, makes it possible to space grooves up to  $\frac{1}{2}$ " apart at convenient crank speeds. The time scale shows elapsed recording time at both 78 and 33 $\frac{1}{3}$  RPM.

**Cutting Head Carriage:** The cutting head is mounted on an apron, hinged for adjustment of

the cutting angle. A lever is provided for lowering the cutting needle on the disc. A spring lever engages the feedscrew. The vertical damper is mounted beside the cutter carriage. The depth of cut is adjusted by a counterbalance spring. Feedscrews can be changed quickly by loosening one thumbscrew.

**Frequency Response:** Cutting head 50 to 8,000 cycles, pickup 70 to 7,500 cycles.

**Noise Level:** Mechanical noise originating in equipment over 45 db below maximum useful sound level reproduced from recordings.

**Impedances:** Cutting head 500 ohms, pickup 500 ohms.

**Cutting Pitch:** Standard feedscrew cuts 112 lines an inch inside-out. Feedscrews for 96, 104 or 120 lines an inch inside-out or outside-in substituted at purchaser's request.

**Speed Accuracy:** Within .4% at both 78 and 33 $\frac{1}{3}$  RPM. Regulation within a single revolution accurate to .2%.

**Power Requirements:** Turntable motor draws 60 watts from a 110 volt 60 cycle line. Available for 50 cycles or 220 volts at no additional charge.

**Operating Dimensions & Weight:** With case closed the 6-D turntable measures 20 $\frac{1}{4}$ "x20"x15" (52x51x38 cm.), weighs 67 lbs. (30 kg.).

**Finish:** Carrying case, black leatherette, metal parts black enamel with chromium trim.

**Shipping Dimensions & Weight:** The table is packed for shipment in a case measuring 36"x28"x19" (91x71x48 cm.), weighing 95 lbs. (43 kg.).

| TYPE | DESCRIPTION | PRICE    | CODE  |
|------|-------------|----------|-------|
| 6-D  | Turntable   | \$400.00 | DELVE |
| 6-E  | Turntable   | 640.00   | DEMPS |
| 6-F  | Turntable   | 555.00   | DEFTA |

NOTE: Deduct \$25.00 from above prices if I-A carrying case is not required.

**PRESTO RECORDING CORPORATION**

NEW YORK, U. S. A.

# PRESTO 6-N Turntable



**T**HE Presto 6-N recording turntable is offered as a replacement unit for the Presto 6-D recording turntable over 1500 of which are now in operation in broadcasting stations and instantaneous recording studios. It includes all the basic equipment needed to make recordings of commercial quality.

The 6-N recorder is an improvement on the 6-D in the following respects:

1. The overhead cutting mechanism has been redesigned so that it is removable as a unit from the turntable and fits into a pocket inside the carrying case for safer transportation.
2. The cutting head mounting has been redesigned so that the weight rests entirely on two slider bars. This facilitates changing feedscrews and gives more accurate groove spacing.
3. Mechanical vibration is greatly reduced by the use of a heavier turntable base in which the turntable bearing and overhead cutting mechanism mounting are cast as an integral part preventing changes in alignment with age or use.
4. The speed shift lever has a locking arm which holds it firmly in place against the stop pin.
5. The design of the overhead mechanism permits quick alignment of the mechanism with the turntable.

## SPECIFICATIONS

**Standard Equipment:** The 6-N recording turntable consists of a turntable, motor drive system and overhead cutting mechanism mounted on a cast aluminum base. The 116-N overhead cutting mechanism includes the 1-C high fidelity cutting head, 15-B spiral-

ling feed screw, the 170-A vertical damper and the 20-A time scale. Accessory equipment which may be added to the 6-N recorder if desired includes the 160-A automatic equalizer, the 125-A microscope and the 1-B carrying case or 4-A wood mounting cabinet.



6-N chassis in a 4-A floor mounting cabinet

**Turntable:** Cast aluminum accurately machined and dynamically balanced. Weight 10 lbs. Equipped with a hardened steel shaft which revolves on a single ball bearing at the base of a bronze bushed shaft well.

**Drive System:** A self-starting, synchronous motor applies power at the inside rim of the turntable through a steel pulley and two rubber idler wheels, one for 78 RPM, the other for 33 $\frac{1}{3}$  RPM. The speed shift lever operates the motor switch and engages the idler wheels. Adjustable stops regulate the pressure against the idler wheels.

**Mounting Base:** Cast aluminum heavily ribbed for rigidity. 10 lbs. heavier than base previously furnished with 6-D recorder.

**Cutting Mechanism:** The 116-N cutter mechanism swings from a cast, bronze bushed bearing in the turntable base. A flange which fits over the turntable shaft drives the feed screw through a worm and gear. The entire mechanism moves to a rest at one side of the turntable when not in use. Provision is made for quick, accurate alignment of the cutting mechanism with the turntable and base. The spiralling feed screw makes it possible to space grooves up to  $\frac{1}{2}$ " apart at convenient crank speeds. A time scale shows the elapsed recording time at both 78 and 33 $\frac{1}{3}$  RPM at cutting pitches of 96-104-112 and 120 lines an inch.

**Cutting Head Carriage:** The cutting head is mounted on an apron, hinged for quick adjustment of the cutting angle. A cam lever is provided for lowering the cutting needle on the disc. A knob on the cutter carriage lowers the feed finger under spring tension on the feed screw. The vertical damper for eliminating rumble or flutter due to vertical modulation is mounted beside the cutter carriage. The depth of cut is adjusted by a counterbalance spring. Feed screws can be changed quickly by loosening one thumb screw. The



Overhead mechanism is carried inside case.

driving gear on the feed screw is permanently mounted and engaged with the worm on the drive shaft so that it cannot be damaged when feed screws are changed.

**Frequency Response:** Cutting head 50 to 8,000 cycles, pickup 70 to 7,500 cycles.

**Noise Level:** Mechanical noise originating in equipment 50 DB below maximum useful sound level reproduced from recordings.

**Impedances:** Cutting head 8 ohms or 500 ohms as ordered, pickup 500 ohms.

**Cutting Pitch:** Standard feed screw cuts 112 lines an inch inside-out. Feed screws for 96, 104 or 120 lines an inch inside-out or outside-in substituted at purchaser's request.

**Speed Accuracy:** Within .4% at both 78 and 33 $\frac{1}{3}$  RPM. Regulation within a single revolution accurate to .2%.

**Power Requirements:** Turntable motor draws 60 watts from a 110 volt 60 cycle line. Available for 50 cycles or 220 volts at no additional charge.

**Operating Dimensions and Weight:** With case closed the 6-N turntable measures 20 $\frac{1}{4}$ " x 20" x 15" (52 x 51 x 38 cm.) weighs 77 lbs. (35 kg.)

**Finish:** Carrying case, gray leatherette, cabinet two tone gray enamel, metal parts gray enamel with chromium trim.

**Shipping Dimensions and Weight:** The 6-N table is packed for shipment in a case measuring 36" x 28" x 19" (91 x 71 x 48 cm) weighing 105 lbs. (47 kg.)

| TYPE | DESCRIPTION                    | PRICE    | CODE  |
|------|--------------------------------|----------|-------|
| 6-N  | Turntable chassis only         | \$415.00 | DONOR |
| 6-N  | Turntable in I-B carrying case | 440.00   | DONEB |
| 6-N  | Turntable in 4-A cabinet       | 500.00   | DOANE |

**PRESTO RECORDING CORPORATION**  
NEW YORK, U. S. A.



# PRESTO Type 75-A and 75-B Recording Turntables

**T**HE lightest 16" dual speed recording turntable made. Recommended for all services requiring a high grade portable recorder. Widely used by broadcasting stations that record local news events for delayed broadcasts; a rugged, compact recording installation for mobile pick-up units.

Used by industrial concerns, hospitals, scientific laboratories and in the visual education departments of schools and colleges in conjunction with 16 mm sound-film projectors for recording and reproducing narrative comment, sound effects and background music with locally produced silent films.

An ideal turntable unit for installation in custom built radio sets designed for owners who wish to reproduce electrical transcriptions and to record complete operatic and symphonic radio programs or educational broadcasts.



TYPE 75-A RECORDING TURNTABLE

## SPECIFICATIONS

**Standard Equipment:** The equipment consists of a 16" cast aluminum turntable, carefully machined to dynamic balance, weighing 10 lbs. It revolves on a single ball bearing at the base of a bronze shaft well. A heavy, live rubber tire on the rim of the turntable engages with a steel, step-pulley on the motor shaft to drive the table. The motor is suspended by rubber grommets in a carriage which is moved up or down by a lever to change the turntable speed. The motor drive and turntable are mounted in a cast aluminum base designed to combine extreme rigidity with light weight. The cutting mechanism consists of a fan gear, worm and pinion driven by a worm on the turntable shaft. The 1-C high fidelity cutting head, 171-A vertical damper, 21-A time scale and 150-C lateral pickup are included as standard equipment. The 75-A table is mounted in the 2A carrying case. The 75-B turntable is mounted in the 3-A cabinet. **Accessories necessary to operate the turntable include recording amplifier, microphone, discs and needles which must be ordered separately.**

**Frequency Response:** Cutting head 50 to 8,000 cycles, pickup 70 to 7,500 cycles.

**Noise Level:** Total of mechanical noise originating in equipment over 45 db below maximum useful sound level reproduced from the recordings.

**Speed Accuracy:** Within .4% at both 78 and 33 $\frac{1}{3}$  RPM. Regulation within a single revolution accurate to .2%.

**Impedances:** Cutting head 8 ohms, pickup 5,000 ohms. Cutting head impedance changed to 15 or 500 ohms, pickup impedance to 200 or 500 ohms at purchaser's request

**Amplifier Requirements:** Maximum power level required for cutting head plus 20 db, average gain required to raise pickup output to 0 db level, 30 db. (Ref. .006W).

**Cutting Pitch:** 112 lines an inch, outside-in or inside-out by shifting a lever

**Power Requirements:** Motor draws 60 watts on a 110 volt, 60 cycle line. Available for 110 volts—50 cycles, 220/240 volts—50 cycles or 220 volts—60 cycles, at no additional charge.

**Finish:** Turntable, gray enamel with chromium trim, 2-A case gray airplane luggage cloth, 3-A cabinet two tone gray enamel with silver trim.



TYPE 75-B RECORDING TURNTABLE

**Operating Dimensions & Weight:** 75-A table, case closed 11"x19"x20½" (28x48x52 cm.) Weight 45 lbs. (20 kg.).  
75-B table, 37"x21"x22½" (94x53x57 cm.).

**Shipping Dimensions & Weight:** 75-A table, 31"x24½"x14" (79x62x26 cm.). Weight 74 lbs. (33 kg.).  
75-B table, 35"x29"x42" (89x74x107 cm.) Weight 85 lbs. (38 kg.).

| TYPE | DESCRIPTION                    | PRICE    | CODE  |
|------|--------------------------------|----------|-------|
| 75-A | Turntable in 2-A carrying case | \$350.00 | YOLLE |
| 75-B | Turntable in 3-A cabinet       | 385.00   | YERBE |
| 75-C | Unmounted turntable chassis    | 325.00   | YACED |

NOTE: In ordering specify impedance required in cutting head and pickup.

## PRESTO Type 9-A and 9-B Recording Turntables

A PORTABLE 12" table for recording and reproducing 6", 8", 10" and 12" records. Its exceptional steadiness, speed accuracy and lack of vibration make it an excellent table for re-recording purposes. Designed for recording the two speed model has ample power for playing 16" electrical transcriptions if equipped with a 16" pickup. It is recommended as a second turntable to be added to the model K recorder for continuous recording. The chassis can be installed in many standard radio sets in place of the ordinary turntable to provide both radio recording and playback facilities.

### SPECIFICATIONS

**Standard Equipment:** Consists of a diecast aluminum turntable with heavy steel shaft which revolves on a single ball bearing at the base of the shaft well. A heavy live rubber tire on the rim of the turntable engages with a pulley on the motor shaft to drive the table. The motor is suspended on rubber grommets. A single lever operates the motor switch and engages the motor with the turntable. The cutting mechanism consists of a worm, gear and pinion driven by a worm on the turntable shaft. The table is equipped with a high grade magnetic cutting head and pickup. The 9-A table operates at 78 RPM only, the 9-B table at both 78 and 33½ RPM. Both are mounted in the 2-C carrying case. Accessories necessary to use the table include recording amplifier, microphone, discs and needles which must be ordered separately.

**Frequency Response:** Cutting head and pickup 80 to 5,000 cycles.

**Noise Level:** Minus 30 db.

**Speed Accuracy:** Within .4% at both 78 and 33½ RPM. Regulation within .2%. Speed is changed by removing pulley from motor shaft.

**Impedances:** Cutting head 5 ohms, pickup 2,000 ohms.

**Amplifier Requirements:** Power level required for cutting head plus 12 db Gain required produce 0 db level from pickup 30 db. (Ref. .006W).

**Cutting Pitch:** 100 lines an inch inside-out or outside-in as specified by purchaser.

**Power Requirements:** Motor draws 30 watts on a 110 volt 60 cycle line. Available for 110 volts, 50 cycles at no additional charge.



**Finish:** Metal parts gray enamel with nickel trim. Case gray airplane luggage cloth.

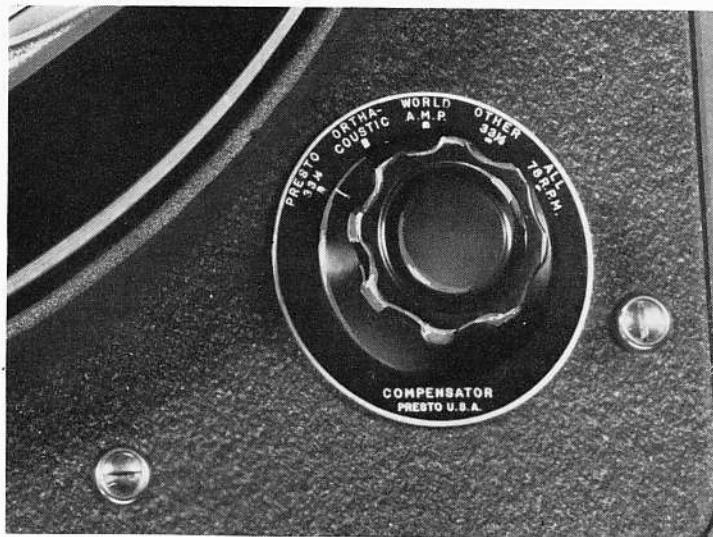
**Dimensions and Weight:** Operating dimensions, case closed. 15¼"x14"x9¼" (38x36x23 cm.), weight 22½ lbs. (10 kg.).

**Shipping Dimensions:** 32"x20¼"x12" (81x51x30 cm.), weight 37½ lbs. (17 kg.).

| TYPE | DESCRIPTION                                    | PRICE    | CODE  |
|------|--|----------|-------|
| 9-A  | Turntable (78 RPM) mounted in 2-C case         | \$120.00 | RIBER |
| 9-B  | Turntable (78 and 33½ RPM) mounted in 2-C case | 135.00   | RAVOW |

PRESTO RECORDING CORPORATION  
NEW YORK, U. S. A.

# PRESTO TYPE 62-A TRANSCRIPTION TURNTABLE



**T**HE 62-A transcription turntable is designed for use by broadcasting stations, theatres, advertising agencies, schools—wherever it is desired to obtain the finest possible reproduction from high quality electrical transcriptions and phonograph records.

The complete equipment includes a 16" dual speed turntable, lateral magnetic reproducer, compensating network and scratch filter mounted in a wood cabinet.

#### Important advantages of the 62-A table include:

1. A new type of compensating network which accurately adjusts the frequency response of the reproducer to match the five distinct recording characteristics used in making NBC (Orthacoustic), E.R.P.I. (World, A.M.P. Lateral), RCA (Standard, Langworth), Presto instantaneous recordings and commercial phonograph records. This

feature enables the operator to adjust his equipment instantly to reproduce the full range of any make of lateral recording.

2. The exclusive Presto rubber-tired turntable driven directly by the motor pulley, a drive system that eliminates gears, idler wheels, belts, flexible couplings and other parts subject to rapid wear. Mechanical vibration is negligible making the table suitable for playing both vertical and lateral transcriptions. Designed to meet the exacting requirements for a recording turntable, the 62-A table has more than sufficient power and speed stability for playing transcriptions.

3. The reproducing head is designed so that the needle point is always in full view, making it simple to place the needle in the proper groove. The diamond reproducing needle is quickly removable and may be replaced with a steel needle when desired. The reproducer arm and mounting are designed to eliminate "flutter" and other undesirable low frequency modulation.

# SPECIFICATIONS

**Standard Equipment:** The complete 62-A transcription turntable includes the following parts and accessories; type 10-A turntable chassis mounted in 3-A cabinet, equipped with 151-A lateral magnetic reproducer and compensating network, and 501-A cut-off filter. Also a 601-A diamond reproducing needle, 502-A screwdriver, and 503-A spirit level.

**Frequency Response:** Uniform within 2 db from 50 to 9,000 cycles when reproducing standard makes of transcriptions.

**Noise Level:** Total of all sound, originating in equipment, over 50 db below maximum useful sound level.

**Reproducing Needle:** Diamond, hand lapped to fit standard groove dimensions. Needle pressure 1 3/4 oz.

**Output Level:** Amplification of 50 db is required to produce a power output of .006 W when reproducing from standard frequency record.

**Output Impedance:** Standard equipment is designed to work into impedance of 200 or 250 ohms. Type 505-A matching transformer required for 50 or 500 ohm input.

**Speed Regulation:** Speed accuracy of .4% is maintained at both 78 and 33 1/3 RPM. Speed regulation within a single revolution is accurate to .2%.

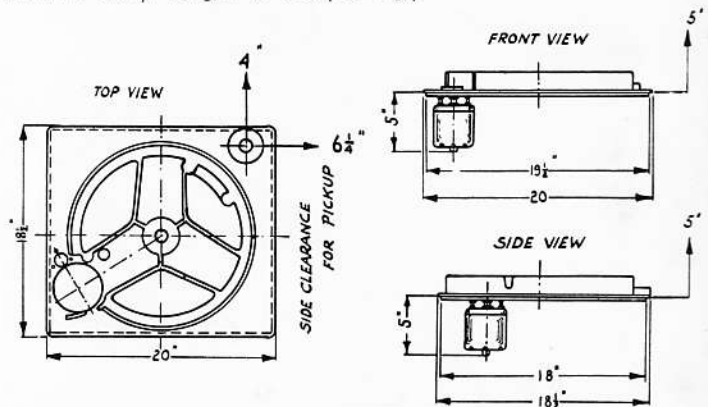
**Controls:** Combination speed change lever and motor switch. Five point selector switch for compensating network. Four point selector switch for scratch filter giving cut-off at 4000, 5500 or 7500 cycles.

**Power Requirements:** Synchronous motor draws 50 watts from 110 volt, 60 cycle line. Motors for other voltages and frequencies available at extra cost.

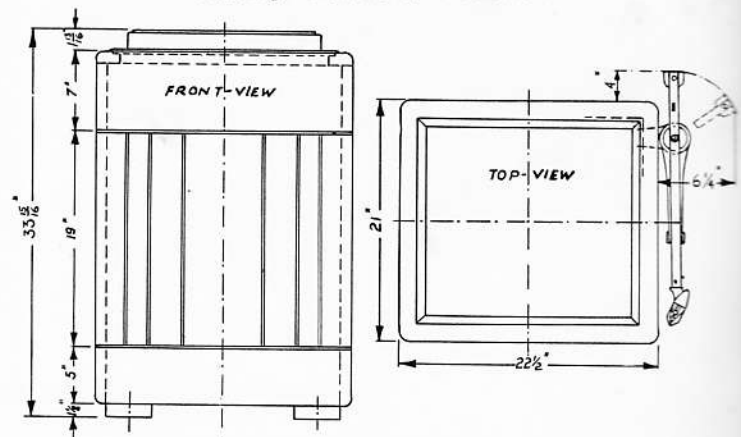
**Mounting:** Heavy wood cabinet mounting turntable 33" above floor level, equipped with four adjustable feet for leveling table, finished in two tones of gray with silver trim.

**Operating Dimensions and Weight:** Overall clearances required for installation shown in Figures 1-A and 1-B.

**Shipping Dimensions and Weight:** Packed for shipment in a case 27" x 25" x 40" (68 x 63 x 101 c.m.), weight 95 lbs., (43 kg.), and one carton measuring 25" x 11" x 11" (63 x 28 x 28 c.m.), weight 10 lbs. (4.5 Kg.).



Mounting Dimensions of 10-A Chassis



Overall Clearances for Operating 62-A

| TYPE  | DESCRIPTION                             | PRICE    | CODE  |
|-------|---|----------|-------|
| 62-A  | Complete turntable                      | \$350.00 | DANCE |
| 10-A  | Chassis, only                           | 140.00   | TERSE |
| 151-A | Reproducer and compensator, less needle | 120.00   | TILES |
| 501-A | Scratch Filter                          | 25.00    | TALKS |
| 3-A   | Cabinet                                 | 60.00    | TOMES |
| 601-A | Diamond Needle                          | 20.00    | NIGHT |
| 502-A | Screwdriver                             | 1.00     | TRITE |
| 503-A | Spirit Level                            | 1.00     | TUFTS |
| 505-A | Matching Transformer                    | 15.00    | TABOR |

NOTE:—Add \$10.00 to the price of the 62-A turntable or 10-A chassis for adapting equipment to operate on 220 volts, 60 cycles; 220/240 volts, 50 cycles.

**PRESTO RECORDING CORPORATION**  
NEW YORK, U. S. A.