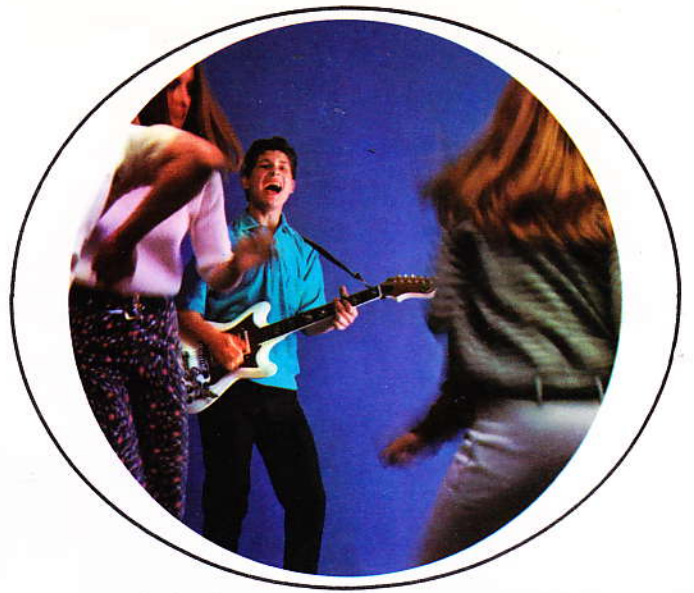




 **KAY**  
INSTRUMENTS

GUITARS, ELECTRIC GUITARS, AMPLIFIERS, MANDOLINS, BANJOS, UKULELES, STRINGS, CASES





(A)      K403 \$250<sup>00</sup>      K407 \$250<sup>00</sup>      K400 \$225<sup>00</sup>      K405 \$250<sup>00</sup>      AMP K765 \$400<sup>00</sup>



# SOLID BODY ELECTRIC GUITARS

From the sleek, modern styling to the throbbing, reverberating guitar sound that typifies today's young music, Kay solid body electrics give guitarists the features they want most. Power-packed magnetic pickup units, easy tuning and lightning fast action that meets the demands of the most difficult single string and chord fingerings. Each guitar in the Kay line, from the value-priced to professional models, is the work of expert guitar craftsmen whose pride won't allow them to give you less than the best. Try them—Kay guitars give you the music you want, at the price you want to pay.

**(A) "K400" Series Professional Electric Guitars.** A new concept in solid body electric guitars! Modern, thin lines in this dramatically styled, compact guitar series. And, performance that matches the magnificent appearance. Designed to meet the exacting requirements of the Space Age Set, "K400" guitars have high-powered magnetic pickup units with individual string adjusting posts; separate tone and volume controls for each pickup and a selector switch that allows the pickups to be played separately or together. Multi-adjustable Melita Synchro-Sonic bridge permits perfect intonation for each string. Built of solid maple, the "K400's" are available in a choice of, striking burnt orange, soft teal blue, gleaming white finish or rich cherry red color and are hand-rubbed and polished to a brilliant lustre. Features: slim "Thin-Lite" neck with adjustable truss rod; celluloid-bound oval rosewood fingerboard with 7 hand-inlaid position markers; covered machine heads with metal buttons; expandable guitar cord; priced and styled for today's demanding young guitarist. Size: 40" x 13½". Fitted carrying case No. 9633 is listed below.

- K400—Double unit; Striking Burnt Orange w/natural maple neck.....\$225.00
- K401—Triple unit; Striking Burnt Orange w/natural maple neck.....\$250.00
- K402—Double unit; Soft Teal Blue w/natural maple neck.....\$225.00
- K403—Triple unit; Soft Teal Blue w/natural maple neck.....\$250.00
- K404—Double unit; Gleaming White Finish w/natural maple neck.....\$225.00
- K405—Triple unit; Gleaming White Finish w/natural maple neck.....\$250.00
- K406—Double unit; Rich Cherry Red Mahogany w/mahogany neck.....\$225.00
- K407—Triple unit; Rich Cherry Red Mahogany w/mahogany neck.....\$250.00
- K9633—Arch Kraft case with plush lining.....\$ 35.00
- K765—Kay Deluxe Twin Speaker 60 Watt Amplifier. Details—Pg. 10.....\$400.00

**(B) K365—Striking New Kay Apollo II Solid Body Electric Guitar.** All-new advanced design that features two power-loaded magnetic pickups with individual string adjusting posts for more accurate string balance. Selector switch allows pickups to be played separately or together. Each pickup has separate tone and volume controls. Deluxe vibrato tailpiece for today's big music sound. Rich cherry red color on contoured solid Mahogany body is hand-rubbed and finished to a sparkling lustre. Celluloid-bound oval rosewood fingerboard with 9 hand-inlaid position markers and nickel silver frets; expandable guitar cord; metal button machine heads and professional flat-wound strings. Adjustable rosewood bridge. 40½" long, 14¼" wide.

- K365—Kay Apollo II Solid Body Electric Guitar.....\$200.00
- K9638—Arch Kraft case with plush lining.....\$ 35.00

**(C) K370—Kay "Artist"—Kay's Outstanding Solid Body Electric Guitar.** Artistry in design and performance highlight this distinguished professional instrument. Three powerful magnetic pickups with individual string adjusting posts assure sensitive response and perfect string balance. Each pickup has separate tone and volume controls. Selector switch permits the pickups to be played separately or together. Exclusive Kay design top-mounted vibrato tailpiece on this handsomely crafted, contoured solid Walnut body. Natural hand-rubbed, satin finish. Adjustable Melita Synchro-Sonic bridge permits individual adjustment for perfect intonation on all strings. "Thin-Lite" neck with adjustable truss rod; celluloid-bound oval rosewood fingerboard with 9 inlaid mother-of-pearl position markers; expandable guitar cord; Grover "Roto Matic" machine heads with metal buttons and professional flat-wound strings. 40½" long, 14¼" wide.

- K370—Kay "Artist" Solid Body Electric Guitar.....\$325.00
- K9638—Arch Kraft case with plush lining.....\$ 35.00

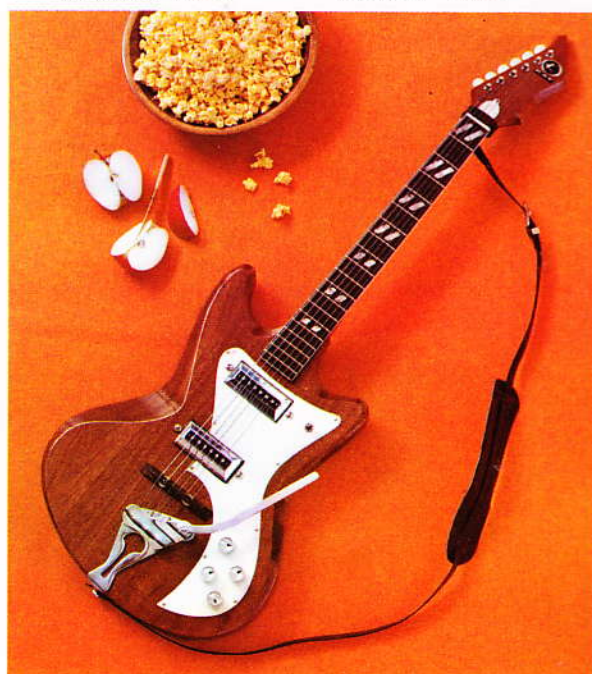
**(D) K355—All-new Kay "Titan II" Solid Body Electric Guitar.** The distinctive beauty of a natural hand-rubbed and polished solid Mahogany body in this medium price, high quality guitar. Deluxe pickup units with individual string adjusting posts are designed to provide maximum tone and performance. Separate tone and volume controls on each pickup assure consistent, sensitive response while the 3-way selector switch allows the pickups to be played separately or together. New vibrato tailpiece provides the modern "rock" sound guitarists prefer. "Thin-Lite" neck with adjustable truss rod; celluloid-bound oval rosewood fingerboard with fancy inlaid pearlette position markers; expandable guitar cord. 40½" long, 14¼" wide.

- K355—Kay "Titan II" Solid Body Electric Guitar.....\$165.00
- K9638—Arch Kraft case with plush lining.....\$ 35.00



(B) K365 \$200.00

(C) K370 \$325.00



(D) K355 \$165.00

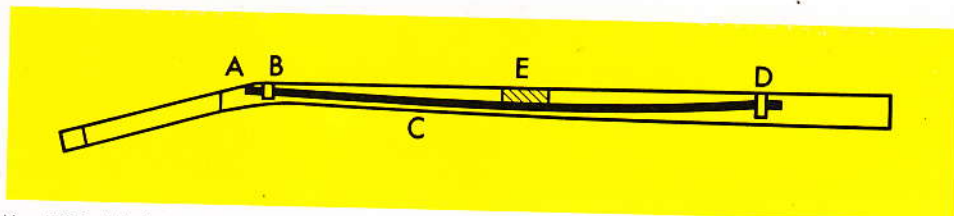




(A) K328 \$119<sup>95</sup> K327 \$99<sup>95</sup> K326 \$79<sup>95</sup>



(B) K310 \$54<sup>95</sup> K311 \$54<sup>95</sup> K312 \$54<sup>95</sup>



Kay "Thin-Lite" Neck



# SOLID BODY ELECTRIC GUITARS

Kay solid body electrics are where the action is with the "big beat" that today's modern music demands. From the thundering bass to the brilliant highs, Kay electrics are here with the sound that's as modern as right now. Kay craftsmen know the needs of today's guitar sound . . . and they know how to meet needs with the finest, most economical quality musical instrument you can buy.

**(A) New Kay Vanguard II Vibrato Solid Body Electric Guitars.** Gleamingly polished hardwood body with beveled edges; maple veneer on top and back. Rich-looking cherry sunburst finish that's as bright as the low value price. Newly designed, extra-powerful pickup units have individual string adjusting posts for perfect string balance. And, the new multi-adjustable bridge permits perfect pitch and allows for the raising and lowering of each string separately to provide another Kay "action" advantage. Pickups have separate tone and volume controls and guitar has a detachable cord. "Thin-Lite" neck with adjustable truss rod. Kay head is styled with all 6 keys on one side; celluloid bound oval rosewood fingerboard with fancy inlaid position markers; celluloid guardplate. The vibrato tailpiece provides a wide range of guitar effects. 38" long, 13" wide.

- K326—Single Pickup Model; w/ tone and volume controls. . . . . \$ 79.95
- K327—Double Pickup Model; w/ selector switch; 4 controls. . . . . \$ 99.95
- K328—Triple Pickup Model; w/ selector switch; 6 controls. . . . . \$119.95
- 9609—Vanguard carrying case. Chipboard, 2-tone covering. . . . . \$ 16.50

**(B) Kay Value Leader Solid Body Electric Guitars.** Brilliantly polished, high performance guitar at a practical budget price. Designed to look sharp and to provide the "solid" guitar sound that is so popular today. Handsome hardwood body is finished in a choice of red, teal blue or shaded Walnut. Value Leader guitars feature the exclusive "Thin-Lite" neck with adjustable truss rod that prevents warpage or misalignment. Stylish Kay head is of a matching color and has all 6 tuning keys located conveniently on one side. Powerful magnetic pickup is designed for maximum output and true electronic tone. With separate tone and volume controls and detachable cord. Genuine oval rosewood fingerboard with 4 inlaid position markers; adjustable metal bridge; hinge-type tailpiece. 38¼" long, 12½" wide.

- K310—In brilliantly polished Red Finish. . . . . \$54.95
- K311—In brilliantly polished Teal Blue Finish. . . . . \$54.95
- K312—Polished Shaded Walnut Finish with Golden Highlights. . . . . \$54.95
- 9614—Sturdy chipboard carrying case, 2-tone covering. . . . . \$13.95

**(C) Introducing Kay's "Speed Demon" Solid Body Electric Guitars.** Sparkling Kay styling and design personifies this rugged, bright sounding solid body electric guitar. The sturdy hardwood body has maple veneer on top and back and is gleamingly finished in a handsome shaded rich cherry red color with light reddish sunburst on top and back. Powerful magnetic pickup unit has individual string adjusting posts and separate tone and volume controls. The famous Kay "Thin-Lite" neck with adjustable truss rod is topped by the exclusive Kay head with all 6 tuning keys conveniently located on one side. Genuine oval rosewood fingerboard has 9 inlaid position markers. Adjustable rosewood bridge; specially designed quality strings. An outstanding value in a great sounding solid body electric guitar. 38" long, 13" wide.

- K318—Single Pickup Model; with 2 controls. . . . . \$64.95
- K319—Double Pickup Model; separate tone and volume controls for each pickup, total of 4 controls; selector switch that allows units to be played separately or together. . . . . \$87.50
- 9609—Carrying case. Sturdy chipboard, 2-tone covering. . . . . \$16.50

**Exclusive Kay "Thin-Lite" Neck.** A feature on all top Kay guitars, the famous "Thin-Lite" neck has an adjustable truss rod that prevents warpage or misalignment, yet remains thin for fast playing and fingering action. All Kay necks are *guaranteed* not to warp or to slip out of line. A—Adjusting Nut, B—Truss Rod Collar, C—Steel Truss Rod, D—Truss Rod Anchor, E—Fulcrum Block.



(C) K319 \$87.50

K318 \$64.95



# ACOUSTICAL ELECTRIC GUITARS

**(A) Concert hall styling in a thin acoustical type cutaway electric guitar.** Laminated maple body has a rich, new lustrous cherry red finish. Celluloid-bound edges. New power-packed magnetic pickup units with individual string adjusting posts. Separate tone and volume controls. Exclusive "Thin-Lite" neck with adjustable truss rod; genuine rosewood fingerboard with 9 inlaid position markers; adjustable rosewood bridge; nickel plated hinge-type tailpiece. Fully-arched auditorium size guitar is 41 $\frac{1}{4}$ " long, 15" wide, 1 $\frac{3}{4}$ " thin.

- K561** —Kay Concert Hall Styled Single Pickup Model.....\$69.95  
**K562** —Double Pickup Model; separate tone and volume controls for each unit, total of 4 controls; selector switch.....\$87.50  
**K563** —Triple Pickup Model; separate tone and volume controls for each unit, total of 6 controls; selector switch.....\$99.95  
**K9632**—Sturdy Chipboard Carrying Case; two tone covering.....\$17.50

**(B) Kay's new Value Leader arched electric guitar.** Beautiful, lustrous shaded brown finish with golden sunburst on top and back. The fully-arched super auditorium size body is of sturdy crackproof laminated maple with white celluloid-bound edges. Built-in magnetic pickup unit has separate tone and volume controls. Kay "Thin-Lite" neck with adjustable truss rod; white celluloid guardplate. 41 $\frac{1}{4}$ " x 15 $\frac{3}{4}$ ".  
**K6530**—Kay Value Leader Golden Sunburst Electric Arch Guitar.....\$64.50  
**9700** —Astramold Injection Molded Carrying Case.....\$17.95

**(C) Double cutaway with sensitive Vibrato Tailpiece.** A truly fine performance proved guitar. The laminated curly maple top and back has a rich brown mahogany shading with golden sunbursts, hand-rubbed and polished to a rich, deep lustre. Celluloid-bound edges. Two powerful professional pickups have individual string adjusting posts. Separate tone and volume controls for each pickup and a 3-way selector switch. Swift, smooth "Thin-Lite" neck with adjustable truss rod; oval rosewood fingerboard with 6 hand-inlaid pearlette position marker blocks and nickel silver frets; expandable guitar cord; adjustable rosewood bridge; professional electric guitar strings. The new Vibrato Tailpiece adds all of today's wanted modern music sound effects. Auditorium size guitar is 40 $\frac{1}{4}$ " long, 15" wide.

- K585** —Double Cutaway with Sensitive Vibrato Tailpiece.....\$175.00  
**K9632**—Sturdy Chipboard Carrying Case; two tone covering.....\$17.50  
**K770**—Dual Purpose Electric Guitar; Electric Bass Amp (Details: Pg. 13) ..\$250.00

**(D) Double Cutaway with precision Melita bridge.** A professional acoustical electric guitar with top and back of select curly maple beautifully hand-rubbed and polished, contrasting celluloid binding. Engineered with newly designed, extra-powerful magnetic pickup units with individually adjustable string posts for perfect string balance. Pickups have separate tone and volume controls and a 3-way selector switch. Melita Synchro-Sonic bridge permits exact adjustment and fine tuning of each string; has string dampener that produces new and startling effects. Exclusive "Thin-Lite" neck with adjustable truss rod; celluloid-bound oval rosewood fingerboard with 7 fancy hand-inlaid position markers; expandable guitar cord; and deluxe Kay Vibrato Tailpiece that creates the big guitar sound. Deluxe auditorium size, 42" long, 15" wide, 2" thin.

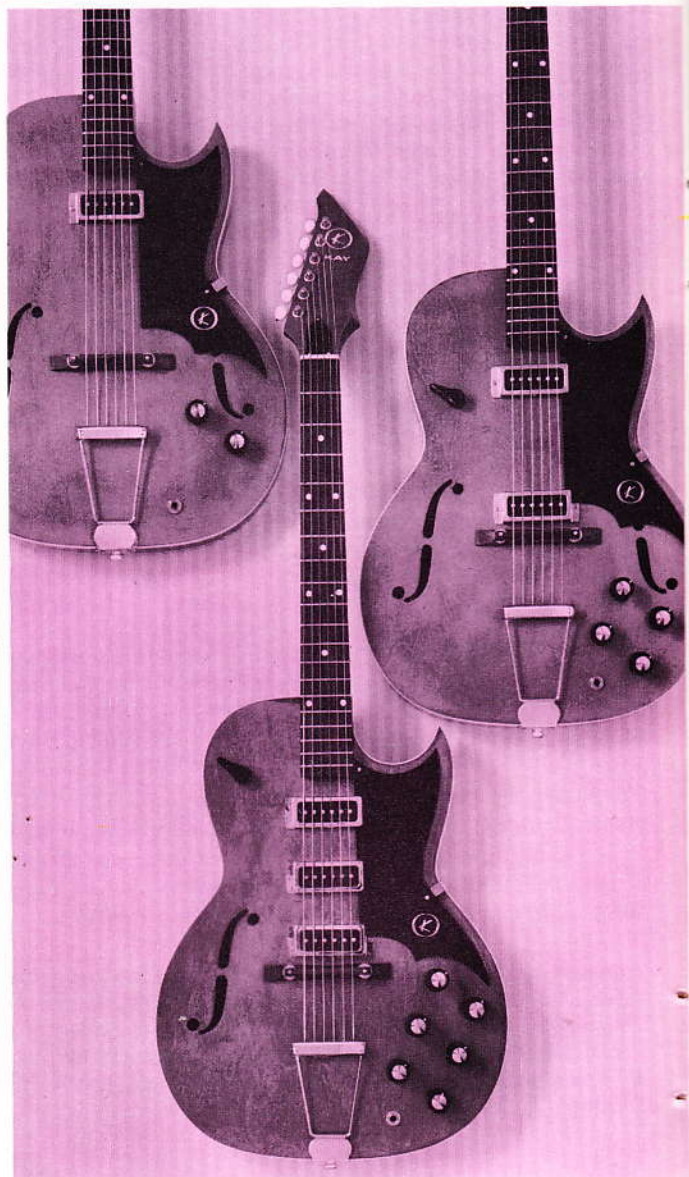
- K625** —Rich Cremona brown finish with golden sunbursts.....\$250.00  
**K626** —Brilliant shaded cherry red finish.....\$250.00  
**K9636**—Arch Kraft Carrying Case with plush lining.....\$ 39.90

**(E) The Kay "PRO"—Professional Model Electric Guitar;** designed for the discriminating musician. New double cutaway electric guitar with laminated, "Fiddle back" curly maple top and back. Beautifully hand-rubbed and polished to a bright lustre to bring out the rich grain of the wood. The newly engineered deluxe magnetic pickup units have individual string adjusting posts for perfect string balance. Separate tone and volume controls and 3-way selector switch. Celluloid-bound select rosewood fingerboard has 9 hand-inlaid Australian pearl position markers; pearl inlaid headpiece; Grover "Roto Matic" machine heads with metal buttons. Melita Synchro-Sonic bridge permits exact adjustment and fine tuning of each string; has string dampener that produces startling and exciting guitar effects. Exclusive "Thin-Lite" neck with adjustable truss rod; expandable guitar cord; Deluxe Kay Vibrato Tailpiece, new celluloid guardplate, 42" long, 15" wide, 2" thin.

- K650** —Transparent Hand-Rubbed and Polished Cherry Red Finish.....\$350.00  
**K651** —Shaded Reddish Mahogany color with golden sunburst on top and back.....\$350.00  
**K9636**—Arch Kraft Carrying Case with plush lining.....\$ 39.90

**(F) Kay "Galaxy II" Acoustical Electric Guitar.** Select laminated curly maple body with arched top and back with heavy celluloid binding; and multiple inlay on top. Highly polished reddish mahogany shader with golden sunbursts. Powerful sensitive magnetic pickup units. Each pickup is adjustable for perfect tone balance with separate tone and volume controls. Vibrato Tailpiece. Celluloid-bound oval rosewood fingerboard has 6 hand-inlaid position markers and nickel silver frets; flat-wound electric guitar strings, 42 $\frac{1}{2}$ " long, 15 $\frac{1}{2}$ " wide, 2" thin.

- K682** —Double Pickup Model with selector switch.....\$129.50  
**K683** —Triple Pickup Model with selector switch.....\$149.50  
**K9635**—Sturdy Chipboard Carrying Case; two tone covering.....\$ 18.50



(A) K561 \$69.95

K563 \$99.95

K562 \$87.50





(B) K6530 \$6450



(C) K585 \$17500

(D) K625 \$25000

(E) K650 \$35000

AMP K770 \$25000



(F) K683 \$14950

K682 \$12950



# ELECTRIC BASSES

There's a reason that Kay is preferred by electric bass players . . . Kay's advanced pickup delivers the exact bass quality you want—from a muted "thump" to a big, driving bass reverb. Special Kay bass strings deliver the feel bass players need for maximum performance. Kay styling and performance features add the flash and sound to combos that is demanded in today's modern music.

**(A) Kay's Finest Quality Professional Electric Bass.** Top of the line! Designed to produce the true, rich bass tones that are so much a part of today's big "rock" sound. The rugged, handsome solid mahogany contoured body is finished in a deep natural mahogany finish and is hand-rubbed and polished to a glimmering sheen. Newly designed extra-powerful magnetic pickup unit has individual adjusting posts for each string for maximum sensitivity in tone and delivery. Select rosewood fingerboard with 6 hand-inlaid position markers along the bass side; handy finger brace for easier playing. Smartly styled black guardplate; specially designed adjustable bridge with brightly plated metal cover; deluxe individual Grover "Rotomatic" tuning keys. Exclusive Kay "Thin-Lite" neck with adjustable truss rod. Available in single and double pickup models. Each pickup has individual tone and volume controls; double pickup model has a selector switch that allows the units to be played separately or together. 44¼" x 14½".

**K5951**—Single Pickup Model with tone and volume controls. . . . . \$175.00  
**K5952**—Double Pickup Model, with selector switch. . . . . \$200.00  
**K9629**—Sturdy Chipboard Carrying Case. Two-tone covering. . . . . \$ 22.50

**(B) Exclusive New Kay Solid Body Electric Bass** has a body of select laminated maple for permanent strength and beauty in a series of three dramatic new colors. Entire body is hand-polished to a brilliant lustre; top and back edges are bound with a wide strip of celluloid with an extra black and white inlay on the top edge. Long, 30⅞" bass scale. Ultra-sensitive bass pickup units are adjustable for perfect string balance. Each pickup has separate tone and volume controls. Kay "Thin-Lite" neck has adjustable truss rod. Genuine oval rosewood fingerboard has 6 hand-inlaid position markers on the bass side for easy visibility while playing. Individual, geared tuning keys; adjustable rosewood bridge with nickel-plated metal cover; specially designed professional quality bass strings. 44¼" x 14½" x 1¾" thin.

**K5921**—Single unit; rich, burnt orange; hand polished. . . . . \$ 99.50  
**K5922**—Double unit; rich, burnt orange; selector switch . . . . . \$125.00  
**K5923**—Single unit; striking white; hand polished. . . . . \$ 99.50  
**K5924**—Double unit; striking white; selector switch. . . . . \$125.00  
**K5925**—Single unit; Soft Teal blue; hand polished. . . . . \$ 99.50  
**K5926**—Double unit; Soft Teal blue; selector switch. . . . . \$125.00  
**K9629**—Sturdy Chipboard Carrying Case. Two-tone covering. . . . . \$ 22.50

**(C) K5935 Double Cut-Away Electric Bass.** Moderate price . . . magnificent performance. Here is the crisp, clean, full sound that electric bassists want for modern group play. Truly beautiful modern styling with double cutaway solid body. Brown walnut shading with golden highlights, hand-rubbed and polished to a lustrous finish. Kay "Thin-Lite" neck with adjustable truss rod that prevents warpage. Genuine rosewood fingerboard; long, 30⅞" bass scale has 6 inlaid position markers. Ultra-sensitive bass pickup is regulated by separate tone and volume controls. Newly designed deluxe, chrome-plated string holder; adjustable bridge; individual machine heads with metal buttons; special strings for the "true" bass feel.

**K5935**—Double Cut-Away Electric Bass 43½" x 14½" . . . . . \$139.50  
**K9629**—Sturdy Chipboard Carrying Case. Two-tone covering. . . . . \$ 22.50

**(D) Kay Value Leader. Solid Body Electric Bass.** Another Kay first . . . a new low price on a solid body, double cutaway electric bass. Body is of select hardwood with beveled edges; available in a choice of three polished finishes. Oval rosewood fingerboard utilizes the longer, 30⅞", bass scale and has 7 hand-inlaid position markers. Fully-adjustable, extra-powerful magnetic pickup unit has separate tone and volume controls. Exclusive Kay "Thin-Lite" neck with adjustable truss rod prevents warpage. Individual tuning gears; adjustable rosewood bridge with metal cover. 43¼" x 13".

**K5917**—Polished Striking red finish electric bass. . . . . \$ 79.50  
**K5918**—Polished Soft Teal blue finish electric bass . . . . . \$ 79.50  
**K5919**—Polished Shaded Walnut finish, golden highlights . . . . . \$ 79.50  
**K9634**—Sturdy Chipboard Carrying Case with two-tone covering. . . . . \$ 16.50  
**K771** —Amplifier . . . . . \$150.00



(A) K5952 \$200<sup>00</sup> K5951 \$175<sup>00</sup>





(B) K5922 \$125<sup>00</sup> K5924 \$125<sup>00</sup> K5925 \$99<sup>50</sup>



(C) K5935 \$139<sup>50</sup>



(D) K5917 \$79<sup>50</sup> K5919 \$79<sup>50</sup> K5918 \$79<sup>50</sup>



# AMPLIFIERS

Only Kay, the company that pioneered transistorized amplifiers, could make them even better with this exciting new line. The advantages of transistors are readily apparent; longer lasting, no warm-up wait, no microphonics and most importantly, superior sound. Note, too, the convenient slanted front control panels that make adjustments simpler. And, each Kay amplifier is Underwriters' Laboratories approved. When you think of amplifiers, think of Kay... performance-matched to Kay electric guitars and electric basses.

**(A) K765—Professional Piggyback Reverb and Tremolo Amplifier.** A hard-working, feature-packed amp with big, powerful "drive." Piggyback control unit permits chassis to be placed up to 25 feet away. 2 output jacks for remote speakers. Extruded and anodized front control panel is slanted for easy operation. Powerful 2-channel, 100 watts of music power output with two Kay designed heavy duty 12" speakers. Two input jacks for each channel. Two volume controls; two bass boost and two treble boost controls; ground reversing switch; pilot light. Tremolo circuit has two controls and foot switch input; reverb has one control with foot switch input. Black Scotch grain vinyl covering with acoustically perfect complementary grille cloth. Metal corner protectors. UL approved. Height 22"; Width 27"; Depth 9½". 17 transistors, 6 diodes. An unbeatable amplifier value.

**K765—Piggyback Amplifier and Speaker Unit. ....\$400.00**  
**K766—Amplifier unit only, without speaker. ....\$250.00**  
**K768—Speaker Enclosure only. ....\$150.00**

**(B) K761—Professional Reverb and Tremolo Amplifier.** Fifty watts of transistorized music power. Two channels; specially Kay designed 12" speaker; two instrument input jacks; one volume, one bass boost, and one treble boost control for each channel. Tremolo and reverb can be played separately or together through channel 1. Tremolo has one speed control and one intensity control; reverb has depth control. A solid state amplifier with two foot switch jacks for tremolo and reverb; pilot light; output jack for remote speaker. Extruded and anodized front; slanted control panel. Black Scotch grain vinyl covering with acoustically perfect, complementary grille cloth. Metal corner protectors. UL approved. Height 21"; Width 25"; Depth 9½". 17 transistors, 6 diodes.

**K761—Professional Reverb and Tremolo Amplifier. ....\$275.00**

**(C) K756—Two Channel Tremolo Amplifier.** Plenty of music power in this 20 watt Solid State amplifier with 12 transistors and 6 diodes. Two channels with 2 input jacks for each channel. Heavy duty Kay designed 12" speaker; pilot light. Tremolo has one speed and one intensity control plus a foot switch jack. Extruded and anodized front slant control panel. Two volume and two tone controls. Tremolo plays through Channel 1, allowing one channel to have tremolo and leaving the other for regular play. Black Scotch grain vinyl covering with complementary, acoustically perfect grille cloth. Metal corner protectors. UL approved. 18" H; 21" W; 9½" D.

**K756—Two Channel Tremolo Amplifier. ....\$125.00**

**(D) K760—Value Leader Reverb and Tremolo Amplifier.** A big 20 watt music power Solid State amplifier at a value price. Two channels with two inputs, 1 volume and 1 tone control for each; pilot light. Specially Kay designed 12" speaker offers maximum tonal output. Tremolo and reverb adds an extra dimension to your own playing skills. Two tremolo and one reverb control; two foot switch inputs. 16 transistors and 6 diodes. Extruded and anodized front slant control panel is easy to operate. Black Scotch grain vinyl covering with complementary, acoustically perfect grille cloth. Metal corner protectors. UL approved. Height 18"; Width 21"; Depth 9½".

**K760—Value Leader Reverb and Tremolo Amplifier. ....\$149.50**

**Foot Switch Pedal.** For either tremolo or reverb operation.

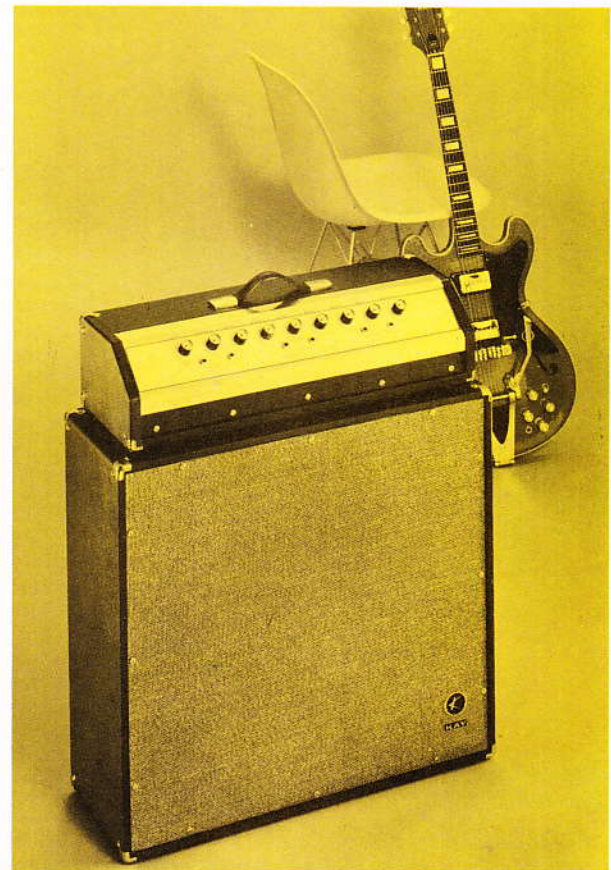
**K9545—For models K754, K755, K756, K760, K761, K765, K766, K777. ....\$6.50**

**(E) K767—Remote Column Speaker Enclosure.** Extra tall, extra powerful column speaker. Designed for use as an additional speaker, or as a replacement speaker unit. Has a handling capacity of up to 100 watts of power. The added height provides greater sound distribution and radiation to allow for absolute optimum performance from your electric guitar. Two powerful Kay designed 12-inch speakers, plus a compression horn (tweeter), are perfectly matched to give the big "rock" sound that is the trademark of today's young music. A tall 48" high, 17" wide, 13" deep. Metal corner protectors. A giant value in a tall performance column speaker.

**K767—Remote Column Speaker Enclosure. ....\$165.00**  
**K766—Amplifier Unit only. ....\$250.00**

**(F) K777—Reverb Power Pack Unit.** This compact reverb power pack works in parallel to any amplifier. It picks up the guitar signal and sends it to the amplifier to produce a big reverb "punch." Three jacks: one for instrument, one for foot switch, one for amp input. Control to vary depth; on/off switch. Easy to use and connect. Self-powered by 4 transistors and 4 diodes. 5" H; 9" W; 4" D.

**K777—Reverb Power Pack Unit. ....\$65.00**

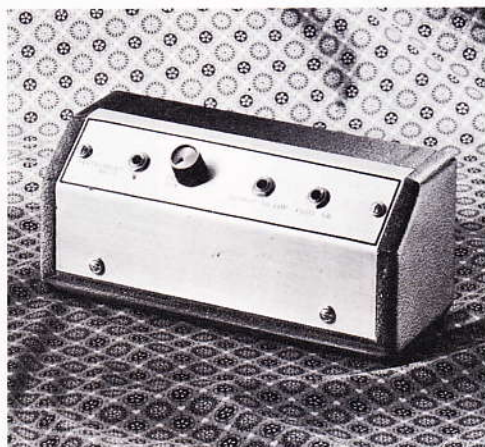


(A) AMP K765 \$400.00





(B) K761 \$275<sup>00</sup>

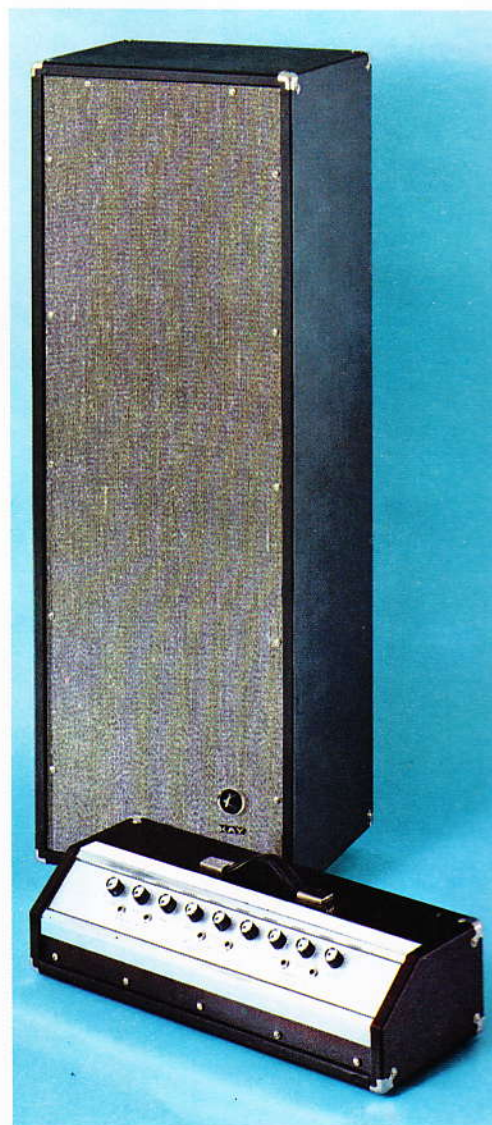


(F) K777 \$65<sup>00</sup>



(C) K756 \$125<sup>00</sup>

(D) K760 \$149<sup>50</sup>



(E) K767 \$165<sup>00</sup>

K766 \$250<sup>00</sup>





(A) K750 \$3995



(B) K755 \$9950

(C) K752 \$4995



(D) K754 \$7995



# AMPLIFIERS

(A) **K750 Budget Leader Amplifier.** The advantages of high performance in a low-priced, high-powered amplifier. Front control panel is easily accessible for simple operation. Specially Kay designed 8" speaker puts out the "big" sound of today's young music. Three tubes; three input jacks; powerful AC circuit with isolation transformer. Separate volume and tone controls for greater adjusting flexibility; on/off switch. Equipped with 10 foot line cord. Height 12½"; Width 15¾"; Depth 6". UL approved.

K750—Budget Leader Amplifier .....\$39.95

(B) **K755 Solid State Tremolo Amplifier.** Here is a popularly priced amplifier that offers many of the most desired amplifier features . . . many more than are normally found in an amplifier at this price. Fully Solid State amplifier provides 10 watts of music power; 9 transistors, 6 diodes. Rugged 8" speaker provides solid delivery of the big "rock" sound that is so popular today. Three instrument inputs; one foot switch jack and pilot light. Perfectly tapered tone and volume controls are a handsome addition to the control panel. Tremolo has speed and intensity controls. Large cabinet is covered in Scotch grain black vinyl and has a complementary, acoustically perfect grille cloth. Extruded and anodized front control panel is slanted for easy access. UL approved. Height 17"; Width 19"; Depth 9½".

K755—Solid State Tremolo Amplifier.....\$99.50

(C) **K752 Value Leader Amplifier.** This solid performer is a combination of the best features of tubes and Solid State Circuitry. Delivers a big 5 watts of undistorted music power. Specially Kay designed 8" speaker provides clear, true sound. Separate tone and volume controls; three input jacks; on/off switch. The slanted front control panel makes operating a breeze. Handsome Scotch grain black vinyl covering with complementary, acoustically perfect grille cloth. Height 14"; Width 17"; Depth 7". UL approved.

K752—Value Leader Amplifier .....\$49.95

(D) **K754 Tremolo Amplifier.** Big, powerful amplifier that features the exciting tremolo effect. Heavy duty 8" speaker. Five watts of the "Big music" sound emanate from the powerful circuit that utilizes 3 tubes and 1 Solid State transistor. Three input jacks; volume control with on/off switch and tone control; tremolo speed control. Slanted front control panel for easy access. Black vinyl-covered cabinet with complementing grille cloth. Height 16"; Width 18"; Depth 8". UL approved.

K754—Tremolo Amplifier .....\$79.95

# BASS AMPLIFIERS

(E) **K770 Dual Purpose Guitar and Bass Amplifier.** Combo amp that has inputs for both electric guitar and electric bass making it unnecessary for a combo to carry more than one amplifier. Power-packed performance at a real value-packed price. Fifty watts of big, true sound through two channels . . . one designed for electric bass or accordion and one for guitar. Specially Kay designed heavy duty 15" speaker; 2 inputs for each channel (total 4). Guitar channel has volume control, bass boost and treble boost—bass channel has volume and tone controls. Extruded and anodized slant front control panel with pilot light; black Scotch grain vinyl covering with grille cloth. 12 transistors, 4 diodes. Height 27"; Width 22"; Depth 9½". UL approved. Why carry two amplifiers when this Kay innovation will do the job . . . and do it better?

K770—Dual Purpose Guitar and Bass Amplifier .....\$250.00

(F) **K771 Value Leader Bass Amplifier.** Lots of sound delivery in a low-priced amplifier whose circuitry is specially designed for the demanding range of the electric bass or accordion. A fully Solid State amplifier that offers 20 watts of music power. Extruded and anodized slant control panel with pilot light is easy to get at . . . and easy to operate. Rugged, heavy duty 12" speaker provides deep, rich sound. Three inputs; volume control with on/off switch and tone control. Black Scotch grain vinyl covering with acoustically perfect grille cloth. Metal corner protectors. 8 transistors, 4 diodes. Height 21"; Width 25"; Depth 9½". UL approved.

K771—Value Leader Bass Amplifier .....\$150.00



(E) K770 \$250<sup>00</sup>

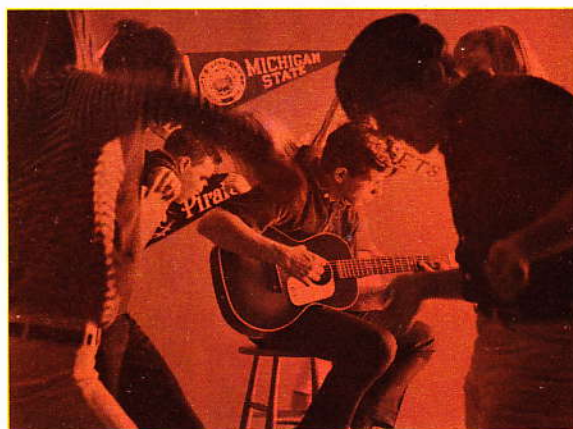
(F) K771 \$150<sup>00</sup>





### GUARANTEE

Every Kay guitar is the work of master craftsmen and is guaranteed for a period of one year following original purchase against any defects in materials or workmanship. Any instrument found to be faulty during this period will be repaired or replaced at no charge.



**KAY MUSICAL INSTRUMENT CO.** 2201 WEST ARTHUR AVE., ELK GROVE VILLAGE, ILLINOIS 60007  
A Division of The Seeburg Corporation